

Matzlewald - Jerzens fishpond



Uphill ascent
300 m



Descent
300 m



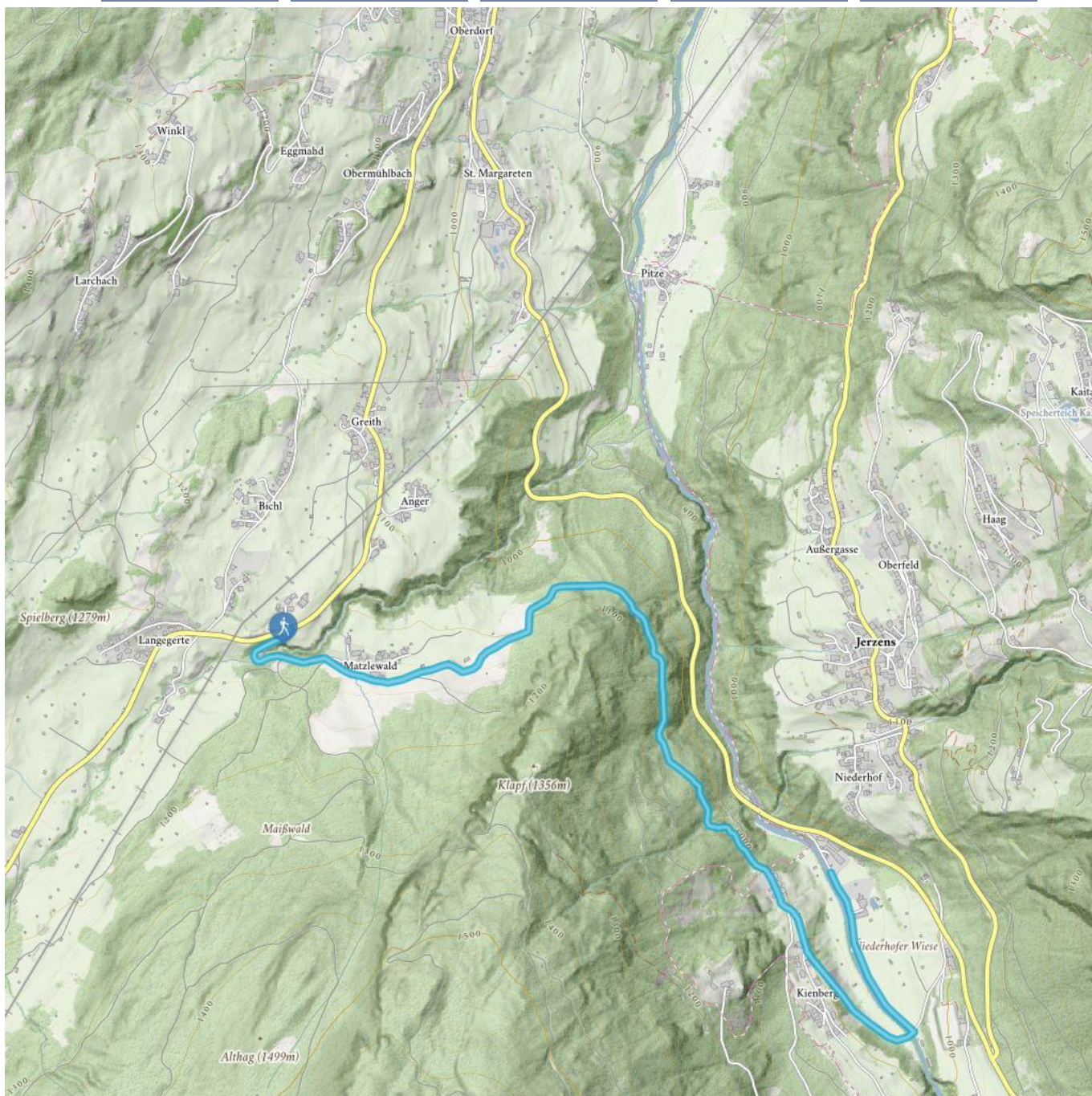
Highest point
1149 m



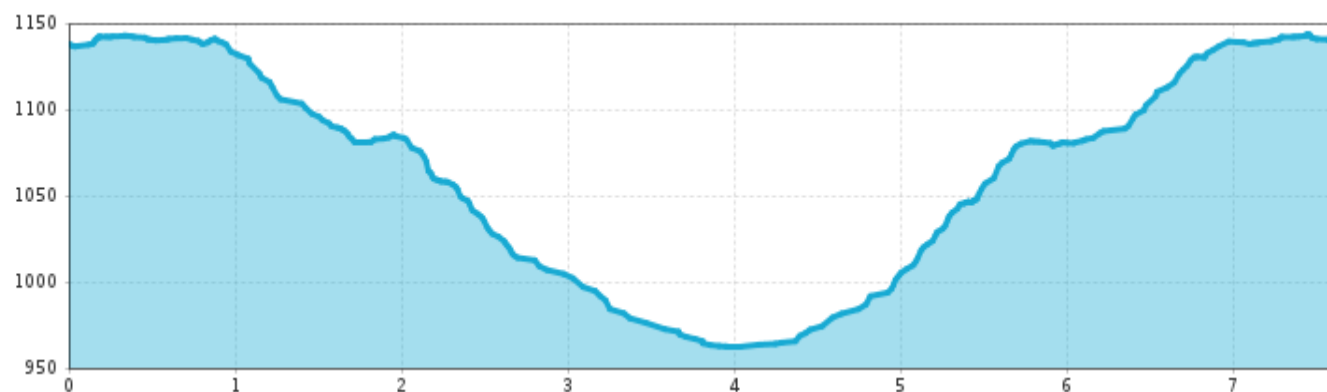
Route length
7,6 km



Walking time / total
2:00 h



Matzlewald - Jerzens fishpond



Information

Starting point

Bus stop Wenns Matzlewald

Destination point

Bus stop Wenns Matzlewald

Path surface

Winter hiking path

Arrival

Take the bus till the bus stop Matzlewald. For the arrival by car you can use the car park Matzlewald free of charge.

Description

Walk from the Matzlewald bus stop to the hamlet Matzlewald. Then continue to walk on the forest road to Kienberg. From the hamlet of Kienberg walk downhill to Jerzens fishpond. After a pub stop at Fischteich Jerzens return refreshed to your starting point via the same route.

 Impressions

