

Bichl circular route



Elevation gain
140 m



Elevation loss
140 m



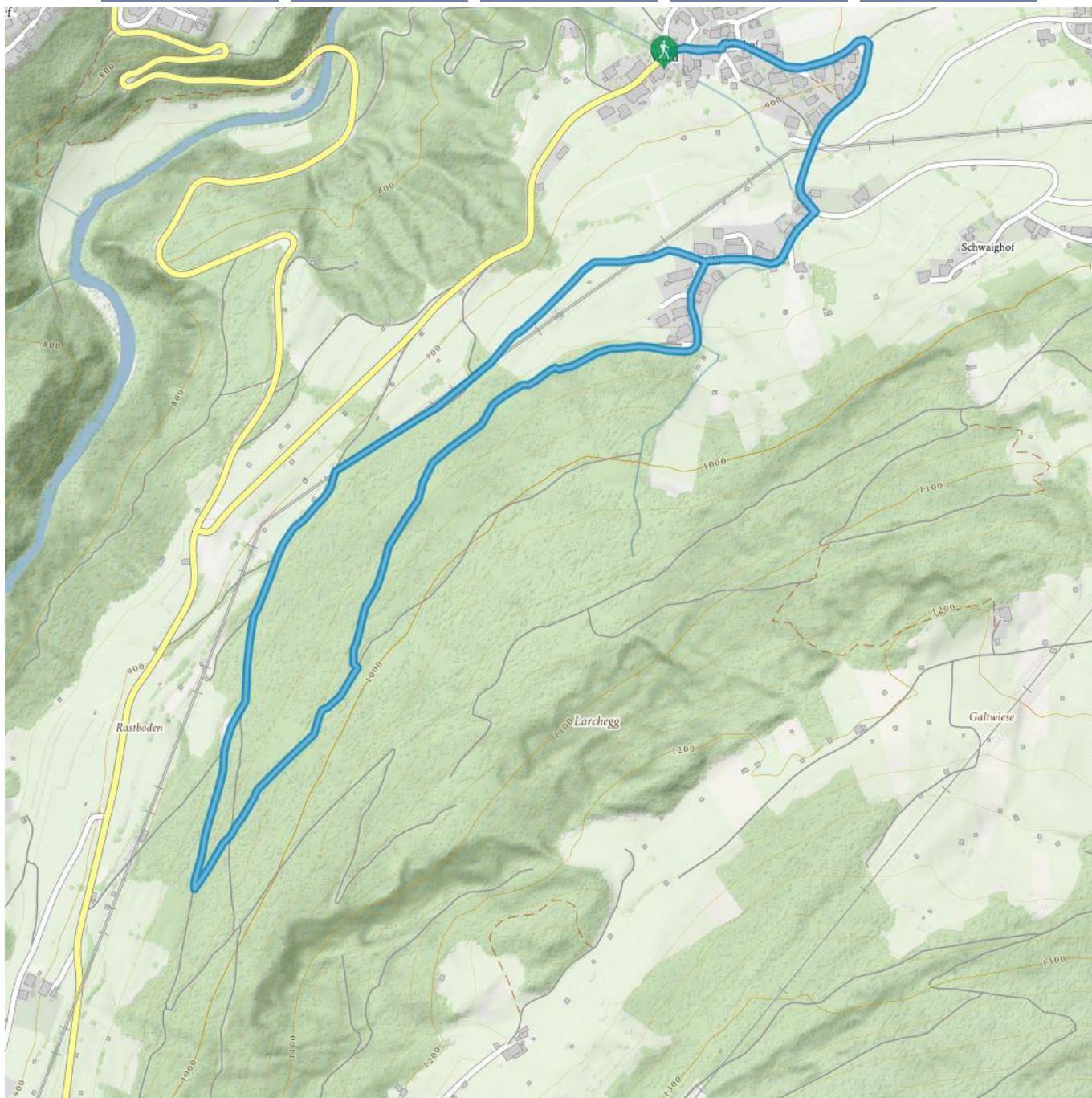
Highest point
1006 m



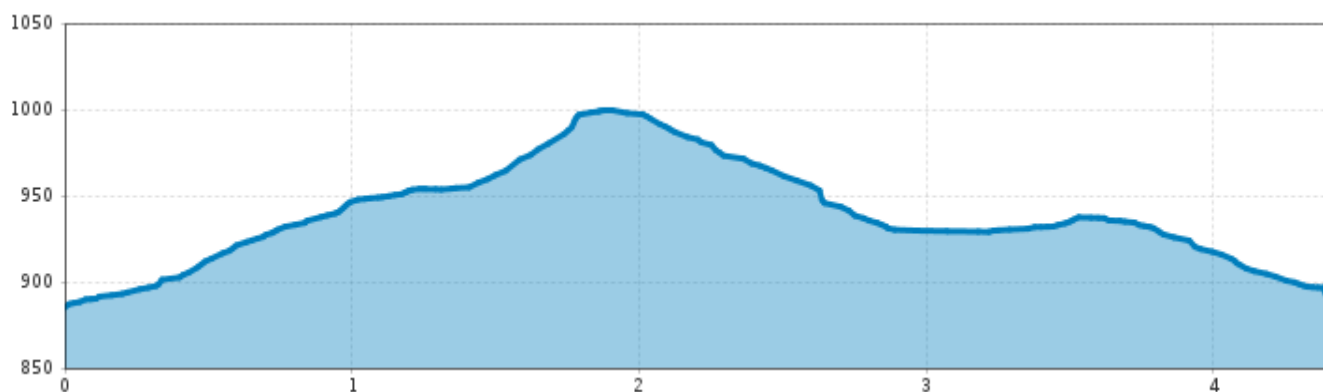
Route length
4,4 km



Walking time / total
1:00 h



Bichl circular route



Information

Starting point

car park Volksschule Wald

Finishing point

car park Volksschule Wald

Path surface

asphalt, forest track, path

Description

Starting point: car park Volksschule Wald. Walk past the church on the left up the hill to the village of Bichl. At the fork, turn right and pass two chapels until you reach the Rastboden. Once there, turn left over a steep path to return to Weiler then continue back to your starting point.

Route type

- Circular hike
- Family hike
- Hike suitable for prams

Getting there

Take the bus till the bus stop Wald Feuerwehr. For the arrival with the car take the car park Volksschule Wald.

 Impressions

