

Osterstein "Small"



Elevation gain
20 m



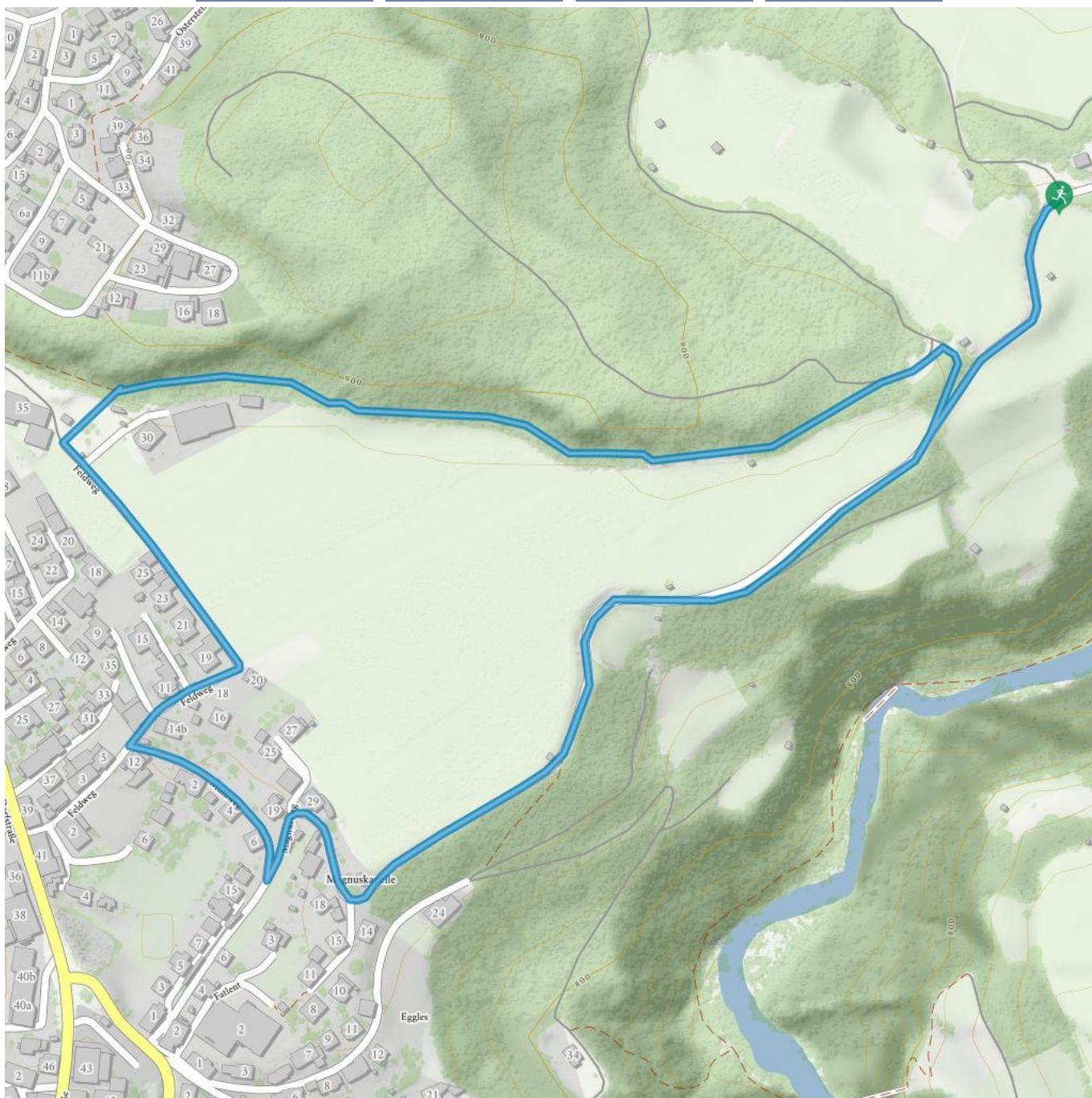
Elevation loss
20 m



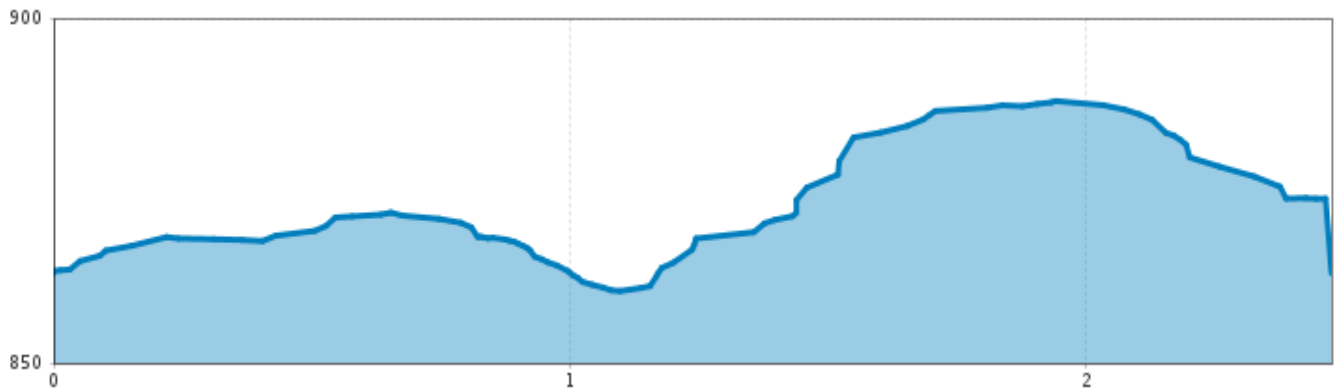
Highest point
892 m



Route length
2,3 km



Osterstein "Small"



Information

Starting point **football pitch**
Finishing point **football pitch**
Underground
Asphalt, forest floor

Description

- start at the sports ground Arzl (parking possible)
- take the forest road round Osterstein
- back to the sports ground leads the Diemer path (illuminated by night)

Ideal route for beginners who want to prepare for greater distances.

 Impressions

