

# Zaunhof/Grüble – Ludwigsburger Hütte – St Leonharder Höhenweg (high-level trail) – Bich



Elevation gain  
1180 m



Elevation loss  
1190 m



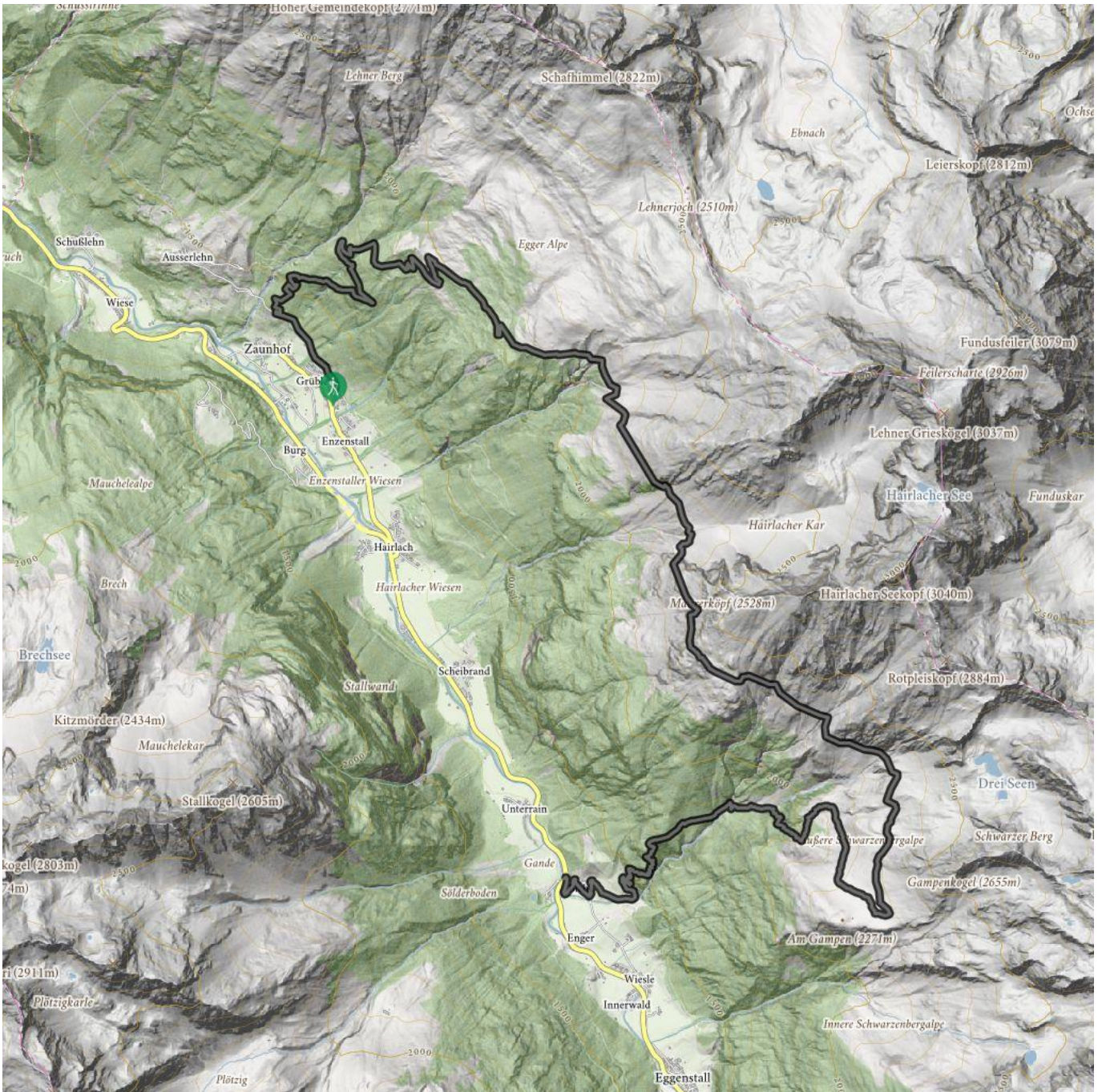
Highest point  
2366 m



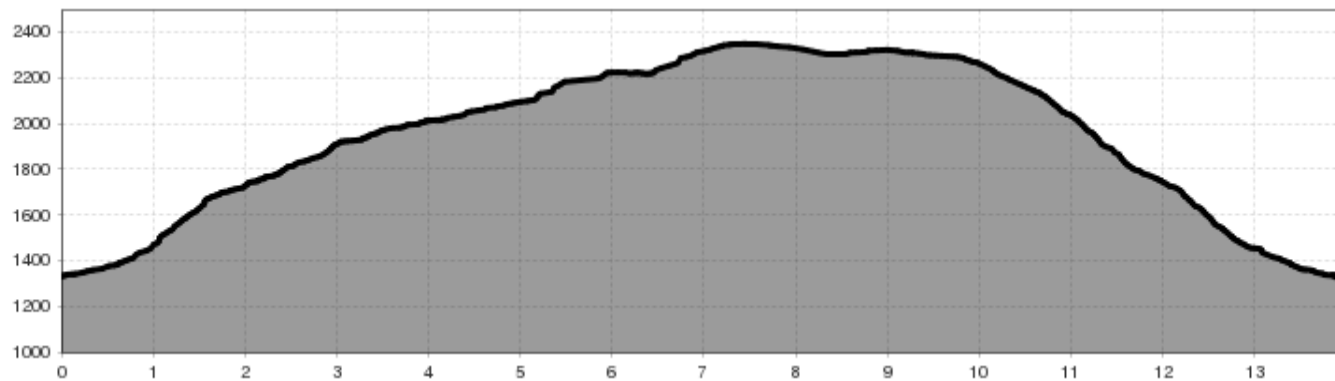
Route length  
13,9 km



Walking time / total  
9:00 h



# Zaunhof/Grüble – Ludwigsburger Hütte – St Leonharder Höhenweg (high-level trail) – Bich



## Information

Starting point

**car park, goods cable car near Zaunhof/Grüble**

Finishing point

**bus stop Zaunhof Grüble**

Path surface

**track, high-level-trail**

Getting there

**Take the bus till the bus stop Zaunhof Grüble.**

## Description

From the starting point, climb up to the catered mountain hut Ludwigsburger Hütte. Then continue to walk in the direction of the Lehnerjoch. After approx. 10 minutes take a right and follow the waymarked trail leading south. After crossing a few cirques and brooks, there is a secured track to the Hairlacher Kar. Following this, there is another ascent to the Scharte am Westgrat of the Hairlacher Seekopfs summit. Continue after this to the Maurerköpfl peak. Keep on southwards to the crossroads 'Am Gampen', then downhill to the derelict mountain hut Äußere Schwarzenbergalm and then continue on to Enger/Bichl.

**Please note that this trail is only suitable for experienced hikers with good stamina.**

 Impressions

