

Circular route: Klausboden/Forstgarten - Kielebergalm - Aifnerspitze – Aifner Alm



Elevation gain
1280 m



Elevation loss
1280 m



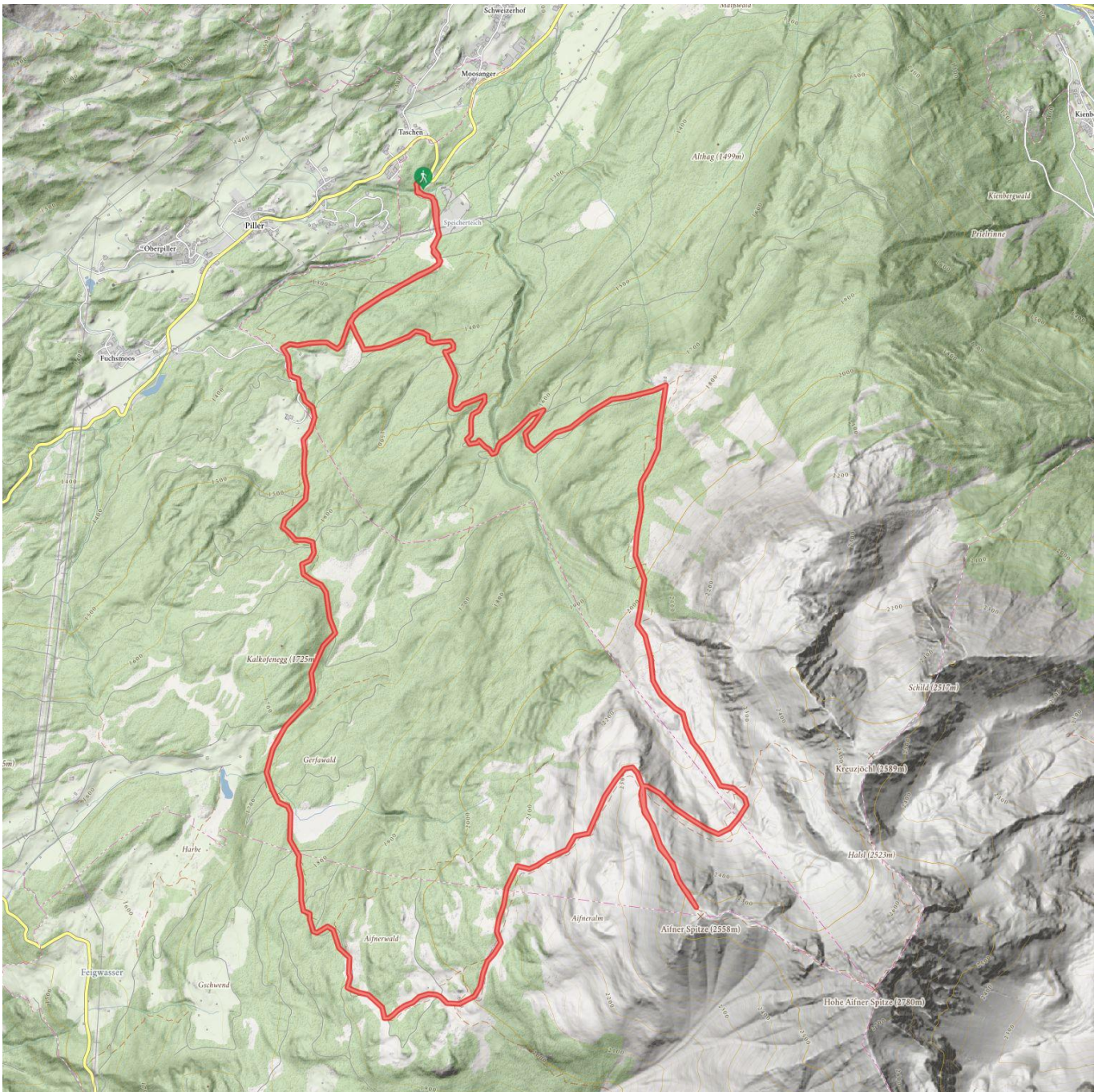
Highest point
2528 m



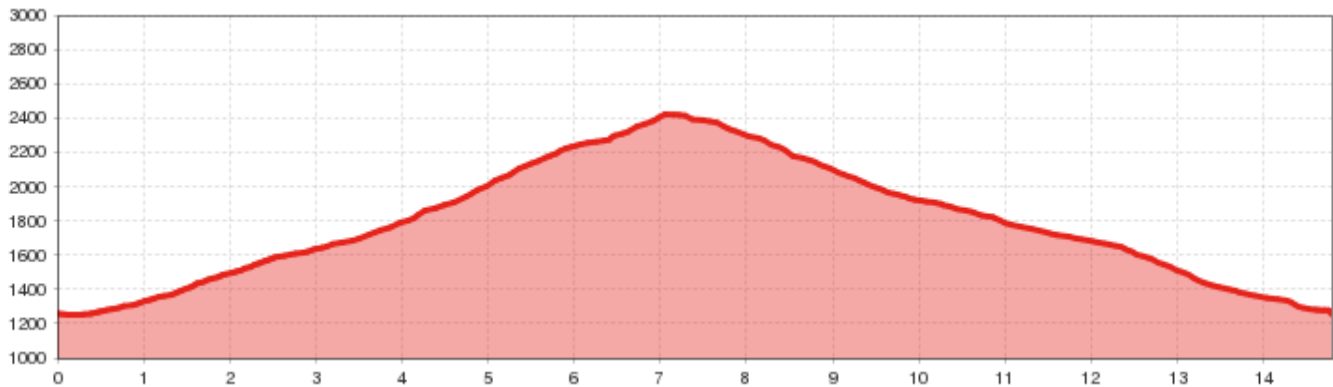
Route length
14,8 km



Walking time / total
8:00 h



Circular route: Klausboden/Forstgarten - Kielebergalm - Aifnerspitze – Aifner Alm



Information

Starting point

Klausboden recreational area

Finishing point

Klausboden recreational area

Path surface

forest path, track - at time steep

Route type

Circular hike

Getting there

Take the bus till the bus stop Piller Taschach.

Follow the road 300 m down until you reach the starting point.

Description

From the starting point you walk along the forest path to the catered mountain hut Kielebergalm. Continue on a path, at times steep, through Wildkar cirque until you reach a fork, turn off to the right in the direction of the Schweinelieger peak. Once there, you may either take a right to walk straight to the catered mountain hut Aifner Alm or a left to climb the Kleine Aifnerspitze peak (very nice vista). Return by the same route to the Schweinelieger and descend on a well-signposted steep path to the Aifner Alm. From there, a waymarked steep path joins with a forest road. After a few meters on the forest road turn right to walk on a steep path in the direction of the Harbeweiher pond/Bärenbad. At the pond, take a right to return via Lachwies to Piller/Forstgarten.

 Impressions

