

Hike to Taschachalm mountain hut



Elevation uphill
90 m



Highest point
1796 m



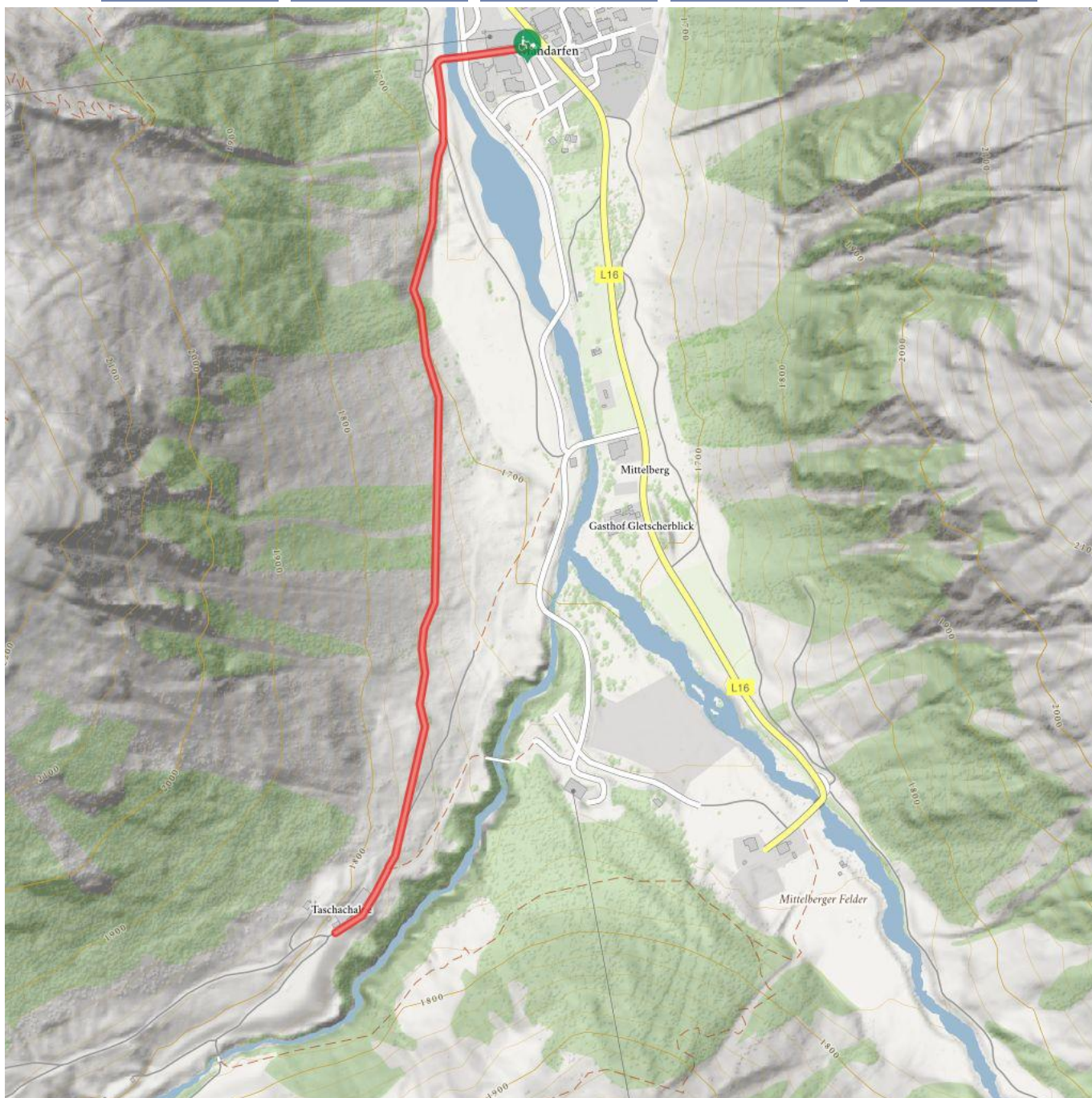
Duration ascent
0:30 h



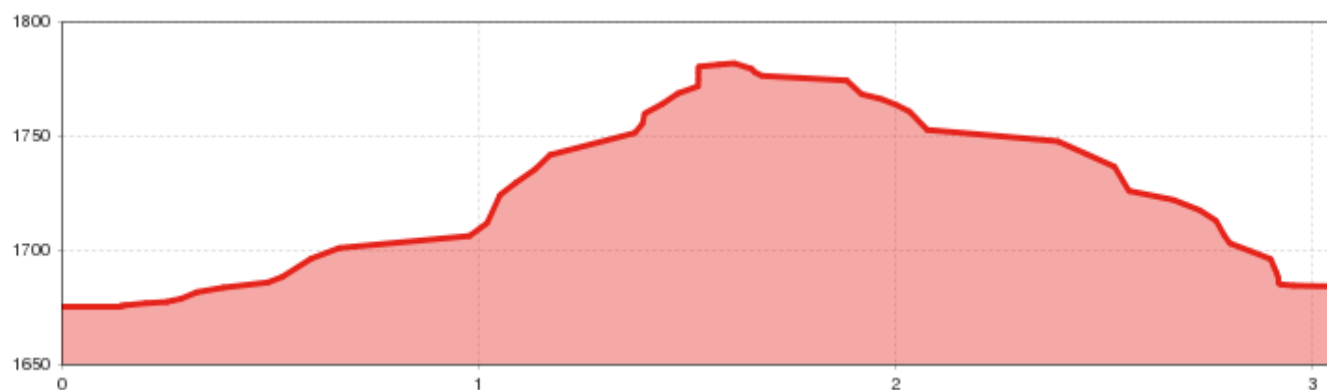
Distance
3 km



Duration total
1:00 h



Hike to Taschachalm mountain hut



Information

Elevation downhill **90**

Starting point

Mandarfen Car Park Riffelseebahn

Destination point

Mandarfen Parkplatz Riffelseebahn

Path surface

broad service road

Parking

At the car park Riffelseebahn. partly asphalted, no floor markings available

Arrival, public transport

Take the bus till the bus stop Mandarfen Riffelseebahn.

Public toilet available

The WC is located in the basement, but it can also be reached from the outside via a side entrance.

Here is one step to overcome. The WC itself is 115 cm wide and 190 cm deep. The door width is 80cm.

Suitable for wheelchairs

Wheelchair accessible

Description

Swiss-Trac hike: From the car park at Riffelseebahn gondola take the service track to the "Taschachalm" on 1,830 m. The trail is 1.5 km long and is manageable with the Swiss-Trac in approx. 30 minutes. The terrace can be accessed via a wooden ramp. The spacious terrace of the catered mountain hut "Taschachalm" offers beautiful views of the mountains that are part of Riffelsee ski resort during the winter season. The toilets are in the basement but this can also be accessed via a side entrance from the outside. Here, only one step must be mounted. The toilet cubicle is 115 cm wide and 190 cm deep. The door is 80 cm wide.

Type of Route

Swiss Trac Tour

Contact

Name

Ortsinformation Mandarfen

Street / number

Mandarfen 62

Zip code

6481

Town

St. Leonhard im Pitztal

Phone

+43541486999

E-Mail

info@pitztal.com

 Impressions



