

# Route - Tiefentalalm



Uphill ascent  
498 m



Descent  
498 m



Highest point  
1880 m



Walking time / ascent  
2:15 h



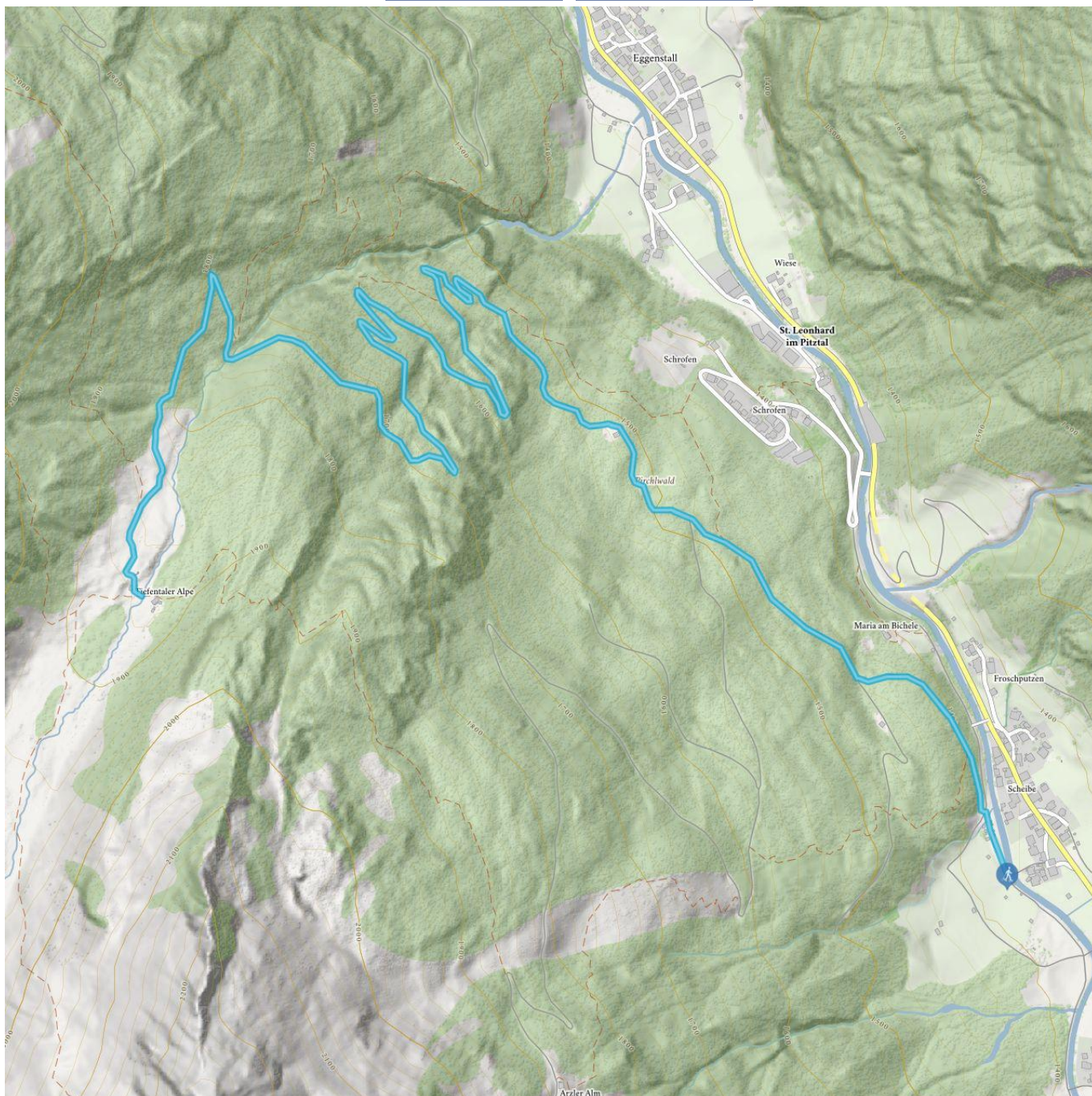
Route length  
9,3 km



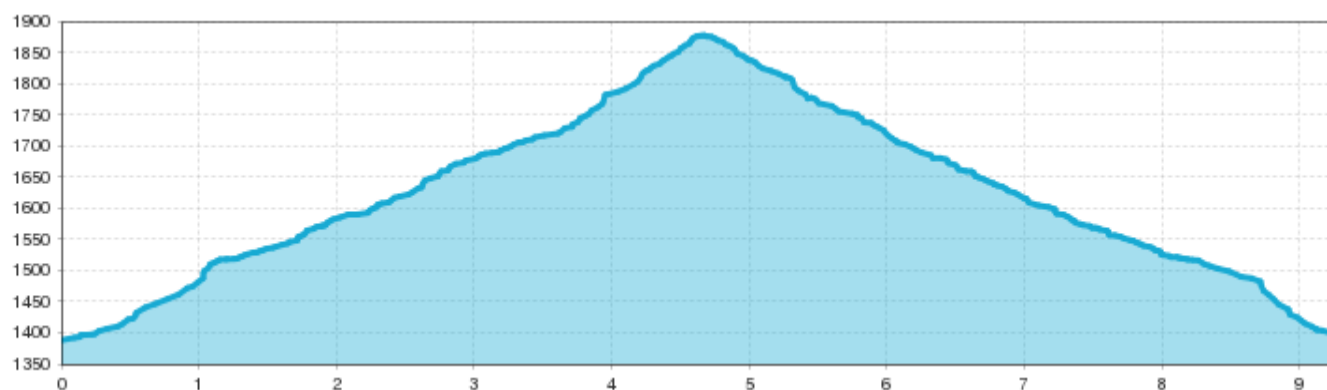
Walking time / total  
3:45 h



Walking time / descent  
1:30 h



## Route - Tiefentalalm



### Information

Starting point

**bus stop Scheibe/Piösmes**

Destination point

**bus stop Scheibe/Piösmes**

Path surface

**winter hiking path, please make prior enquiries regarding avalanche warnings, not signposted**

Arrival

**Take the bus till the bus stop Piösmes Scheibe.**

### Description

**Attention! Snowshoe hikers without mountain guides do tours at their own risk. For your safety, please remember: mountains and their hazards (for example avalanches, rockfall, glacier clefts,..). For inexperienced people, we advise to use a local guide. Don't forget that you are in high alpine terrain. TVB assumes no liability. not signposted**

 Impressions

