

# Leiner Alm circuit



Elevation gain  
450 m



Elevation loss  
450 m



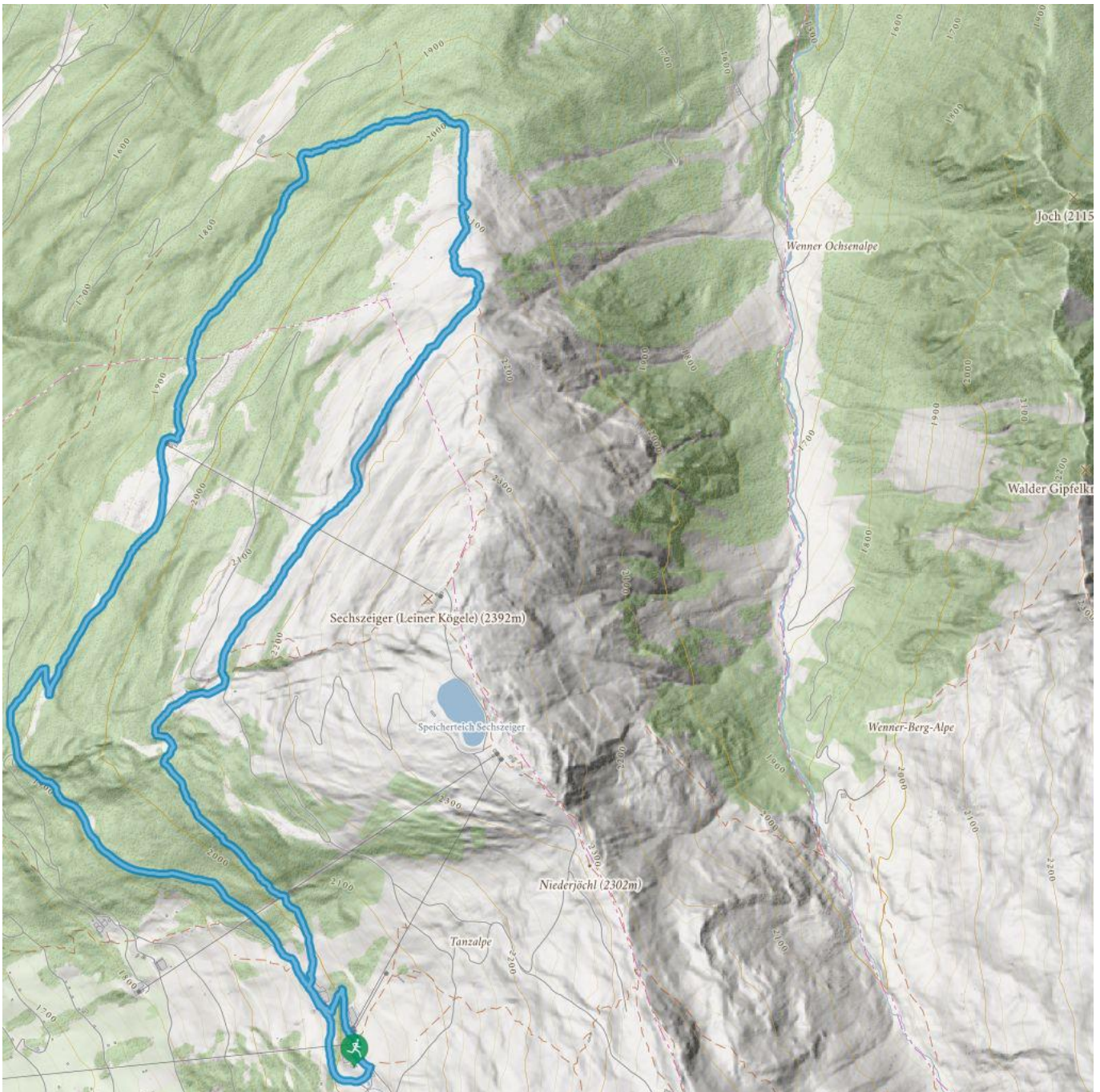
Highest point  
2200 m



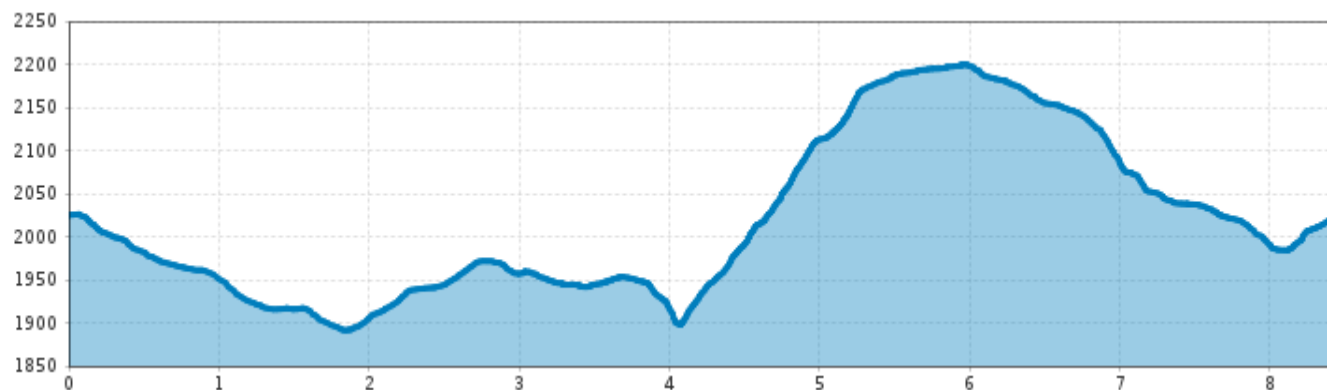
Duration  
1:30 h



Route length  
8,5 km



# Leiner Alm circuit



## Information

Starting point **Middel station**  
Finishing point **Middel station**  
Underground **Forest floor, gravel**  
Getting there  
**Follow the road signs to Jerzens Hochzeiger Bergbahnen.**  
Public transport  
**Take the bus till the bus stop Jerzens Hochzeiger.**  
Parking  
**Free car park at the valley station of the mountain lift Hochzeiger.**

## Description

Run from the intermediate station along the agricultural road to the catered mountain hut Tanzalm. Then continue on this road all the way to the valley station of the Zirben mountain railway. At the following road junction, follow the agricultural road on the left all the way to the starting point of the Single Trail 4A. This trail overlooks the catered mountain hut LeinerAlpe (which is ideal for a break), until it almost reaches the north ridge of the Sechszeiger mountain. Follow Trail 15 until you are just below the mountain hut Kalbenalm. Cross the agricultural road and continue to follow Trail 15 until you reach the Tanzalm. From there, an agricultural road leads back to the intermediate station.

 Impressions

