

Stage without summit – Day 6: Mandarfen – Mandarfen



Elevation gain
1610 m



Elevation loss
1610 m



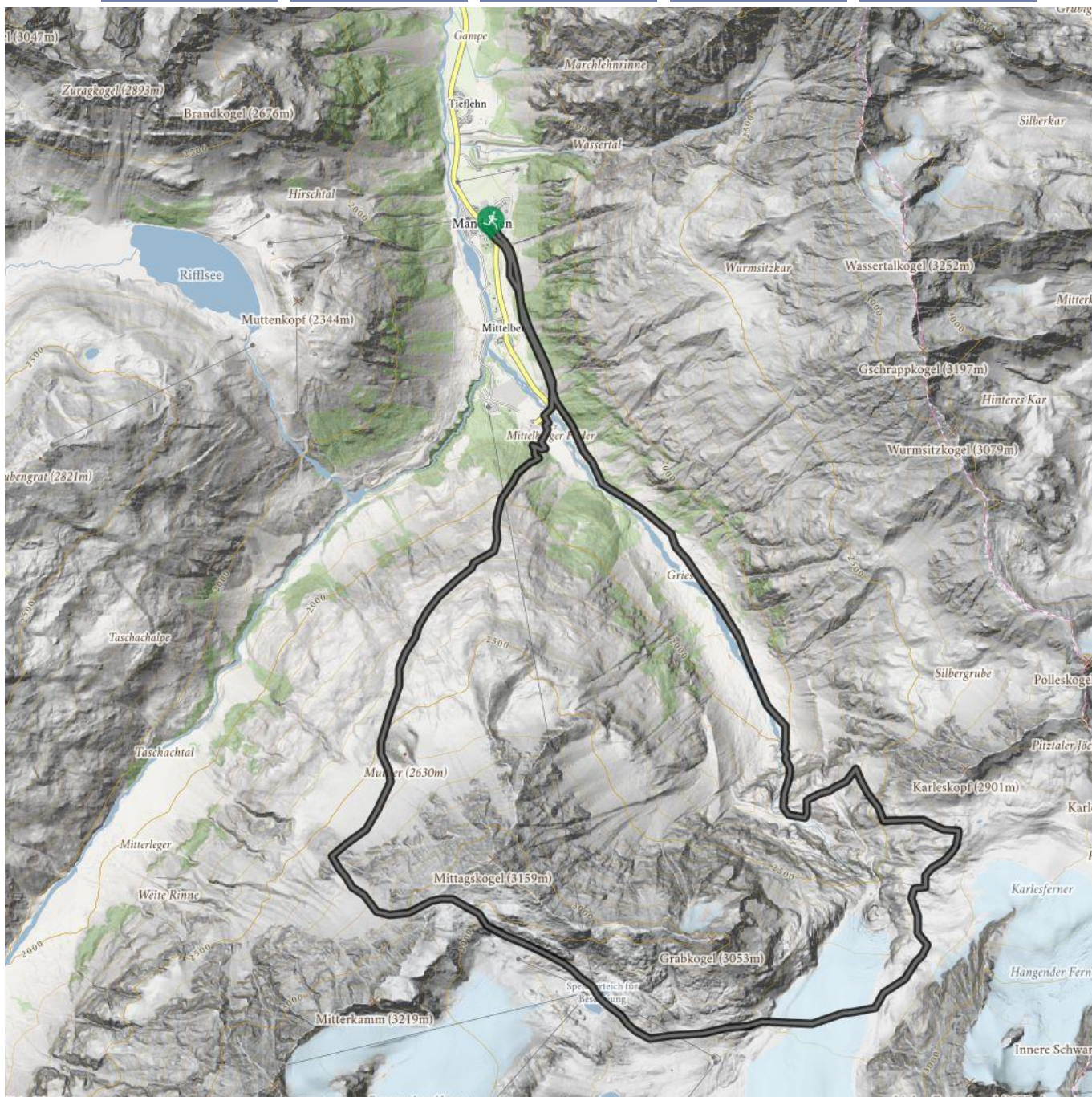
Highest point
3060 m



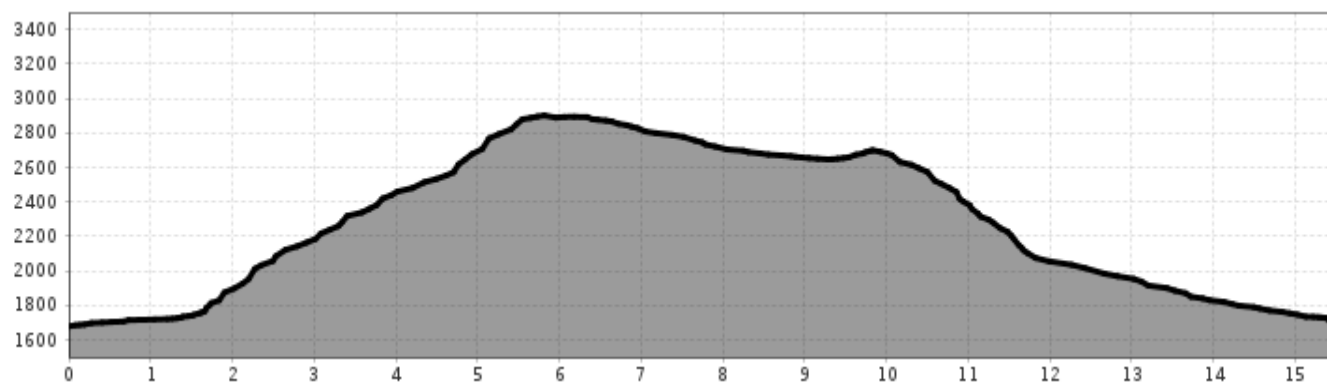
Duration
4:30 h



Route length
15,7 km



Stage without summit – Day 6: Mandarfen – Mandarfen



Information

Starting point **Mandarfen**
Finishing point **Mandarfen**

Description

Starting point Mandarfen: the day starts leisurely with a ride up on the Glacier Express. At the top station a trail on the left leads East across the Mittelberg Glacier. Please note that this glacier crossing towards the Braunschweiger mountain hut requires experience in Alpine terrain. The steep descent from the hut, in parts over steps, rewards with fantastic views of the surrounding glacier world. The rocky waterfall trail passes the icefall down towards the catered mountain hut Gletscherstube. Once there, return to Mandarfen following the agricultural road.

 Impressions

