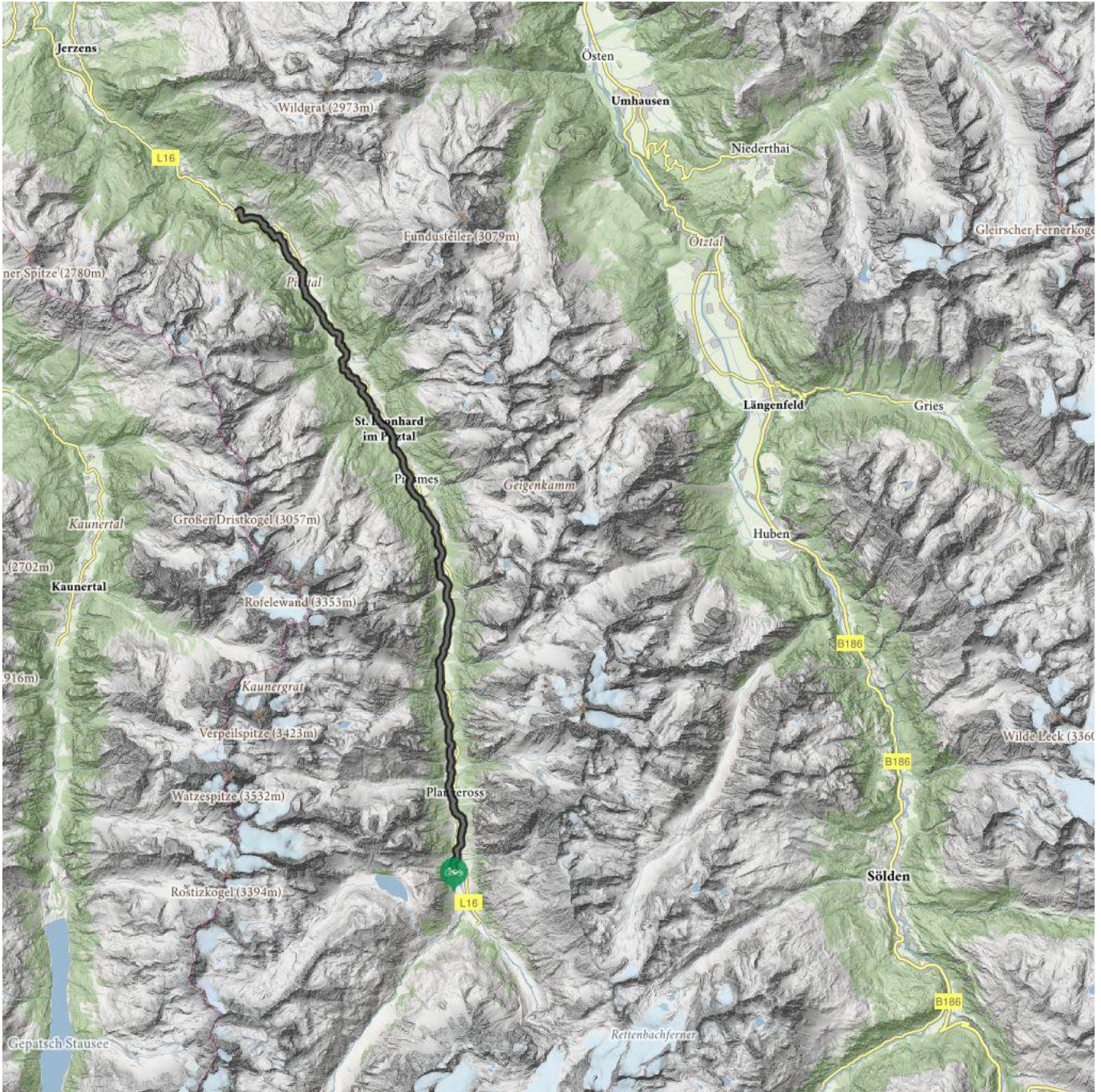


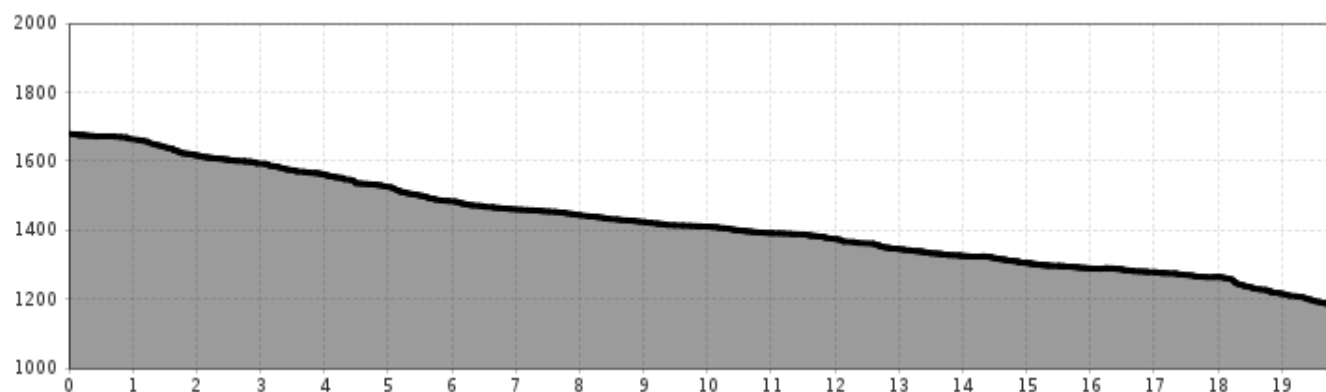
Valley hiking trail with e-handbike


Highest point
1679 m


Distance
22 km



Valley hiking trail with e-handbike



Information

Elevation downhill **499**

Starting point **Mandarfen**

Destination point **Wiese**

Path surface
again and again strong gradients, cross gutters, different terrain, partly by pasture areas

Parking
Car park at the Riffelseebahn in Mandarfen.

Arrival, public transport
Take the bus till the bus stop Mandarfen Riffelseebahn.

Public toilet available
There is a wheelchair WC in the community hall St. Leonhard. Please call the municipality of St. Leonhard beforehand so that they can give you access +43 (0) 5413 87 201

Suitable for wheelchairs
Limited wheelchair accessibility

Description

Hike with E-Handbike: The valley hiking trail from Mandarfen to Wiese (ca. 22 km) can be navigated either by electric handbike or sections of it by Swiss-Trac. If you are using an electric handbike, we would advise to start in Mandarfen and take the route out of the valley. The route is overall challenging as it repeatedly features steep inclines and varied terrain. There are several sections through grazing pastures. We would recommend the following sections for Swiss-Trac users:

- Mandarfen and Neurur (ca. 6 km)
- Stillebach and Eggenstall (ca. 4 km)
- Enger and Wiese (ca. 5 km)

You can choose start and end points in any of the villages and hamlets of St Leonhard within these three sections.

Type of Route

E-Speedbike Tour

Contact

Name
Ortsinformation Mandarfen

Street / number **Mandarfen 62**

Zip code **6481**

Town
St. Leonhard im Pitztal

Phone **+43 (0) 5414 86 999**

E-Mail info@pitztal.com

 Impressions

