

Fallwandweg/Tiefentalalm 612



Uphill ascent
500 m



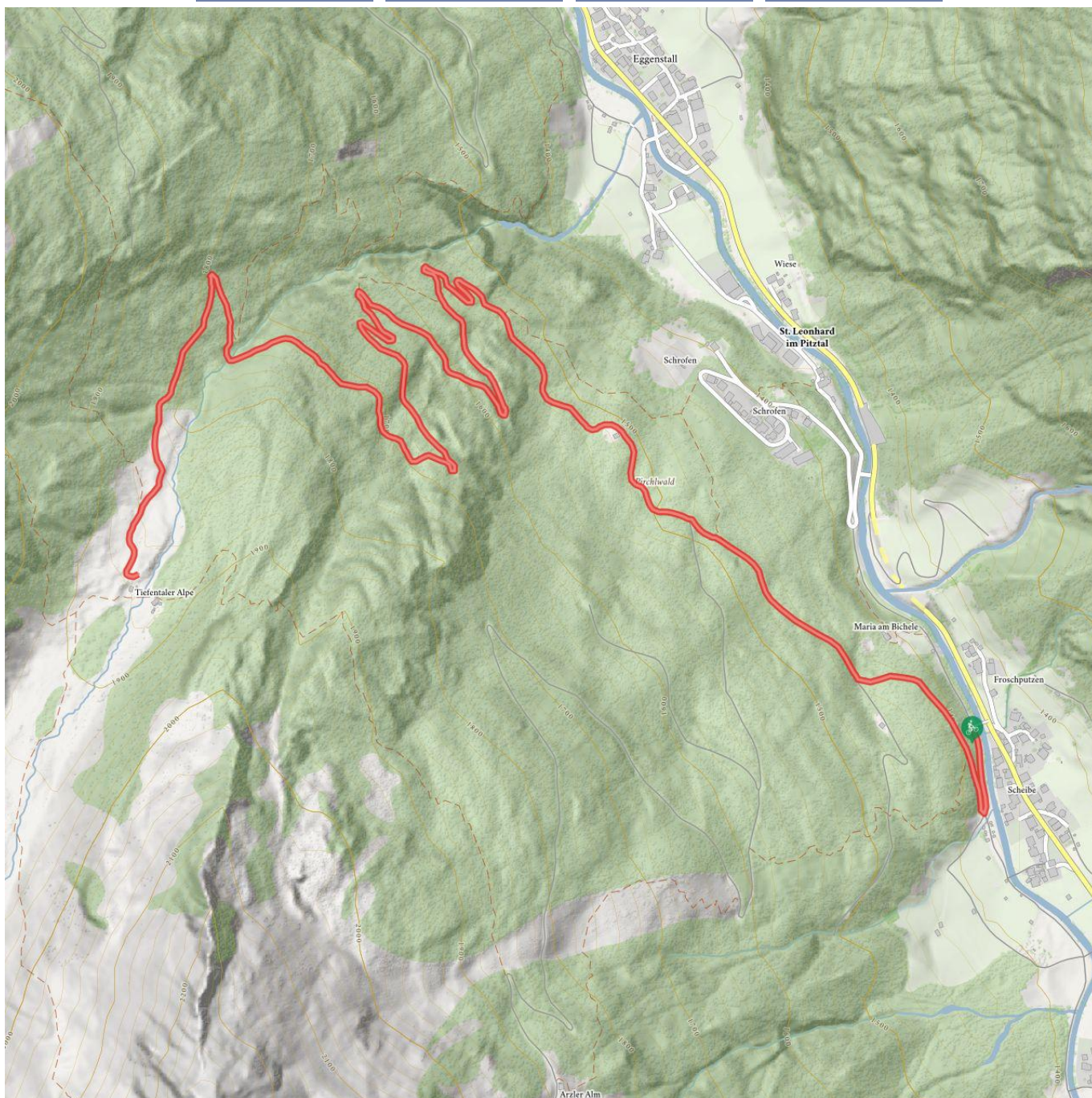
Highest point
1880 m



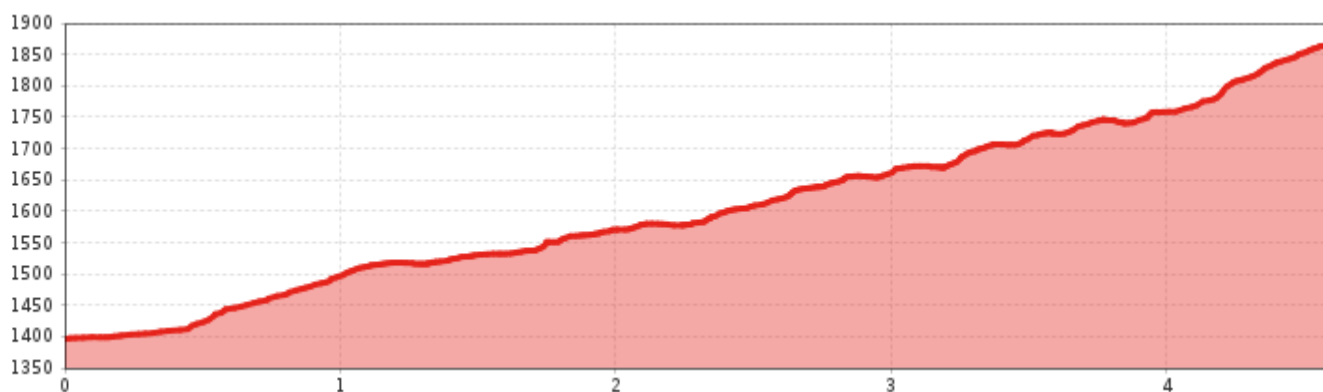
Ride time
1:20 h



Route length
4,7 km



Fallwandweg/Tiefentalalm 612



Information

Starting point	St. Leonhard/Scheibe
Destination point	Tiefentalalm
Path surface	4.7 km Gravel
Number	612
Duration E-Bike	0:45 h
Fitness	4
Technical	3
Arrival	Take the bus till the bus stop St Leonhard Scheibe.

Description

Start in Piösmes at "Gasthof zur Einkehr" restaurant (parking available). Initially set out on the same route as to Arzler Alm. After a few kilometres you will reach the fork to the catered mountain hut Tiefentalalm (Fallwandweg). A mountain brook rushes past the idyllic Tiefentalalm and is a welcome way to cool down your feet. Take care on your way down, especially in the first bend.

 Impressions

