

# Hike to Wildgrat



Elevation gain  
1170 m



Elevation loss  
1170 m



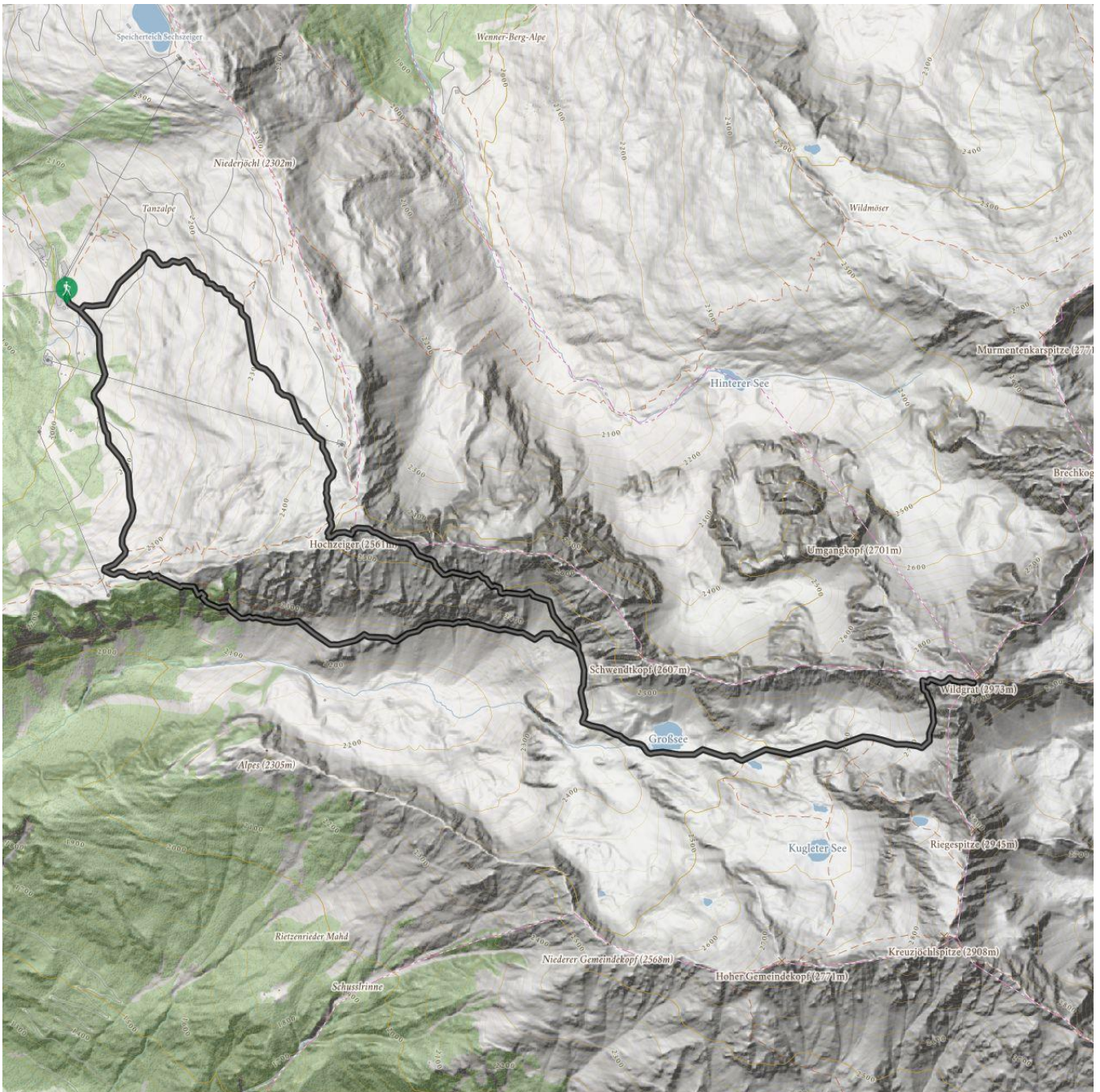
Highest point  
2921 m



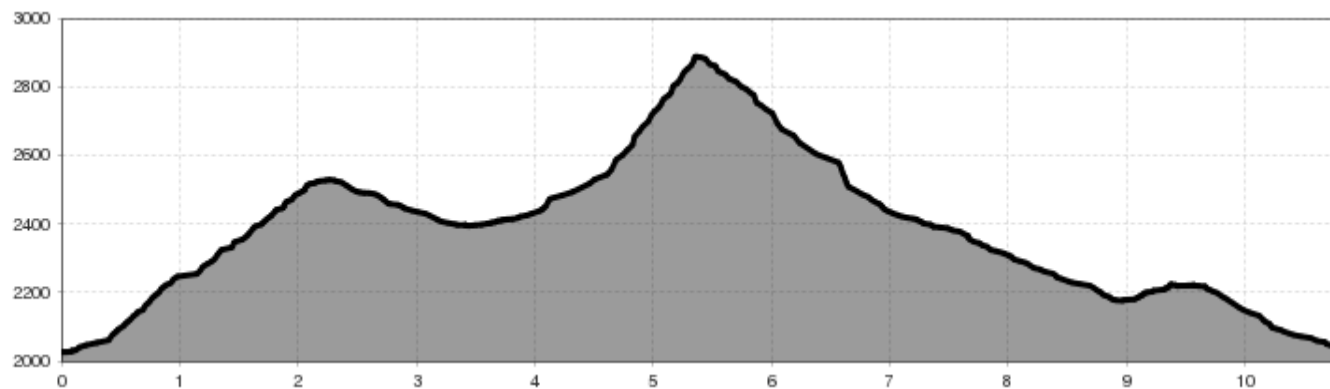
Route length  
10,8 km



Walking time / total  
6:00 h



# Hike to Wildgrat



## Information

Starting point **gondola top station**  
Finishing point **gondola top station**  
Path surface  
**track, It is advisable that hikers taking this path should not have any fear of heights or be prone to dizziness**  
Getting there  
**Take the bus till the bus stop Jerzens Hochzeiger. Afterwards use the lift (Sektion I) up to the starting point.**

## Description

Starting point: gondola top station. From there, take the path to the Hochzeiger mountain and continue to the Riegetal valley. A second alternative route would be to turn right at the top station and take the path to the Zollberg peak and to the Groaßsee lake. From the lake at 2,416 m take a steep trail to the 2,971 m Wildgrat peak, keeping to the left at all times. It is advisable that hikers taking this path should not have any fear of heights or be prone to dizziness. Return via the Zollberg.

 Impressions

