

Hike to Arzler Alm



Uphill ascent
500 m



Descent
500 m



Highest point
1894 m



Walking time / ascent
2:00 h



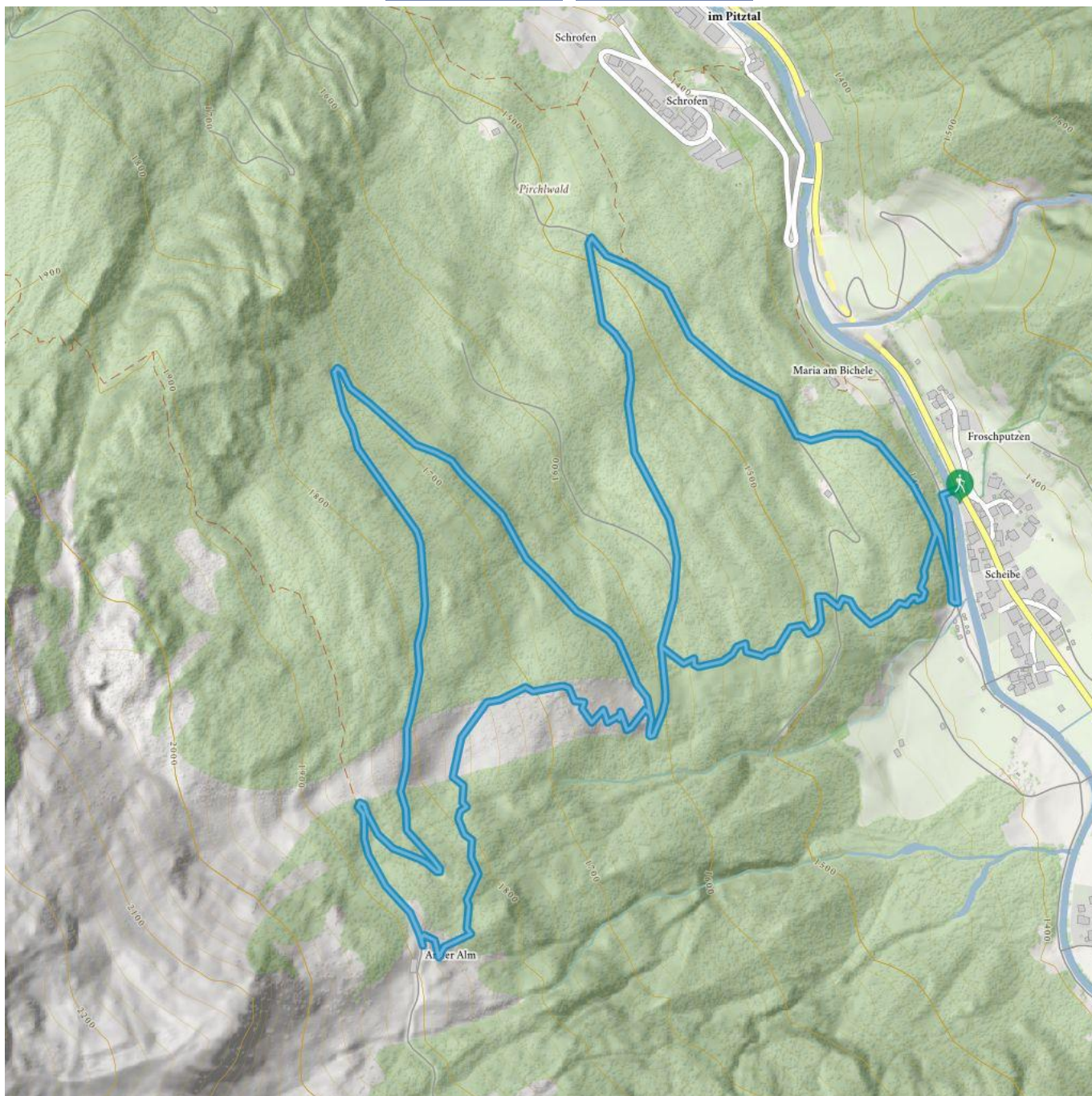
Route length
6 km



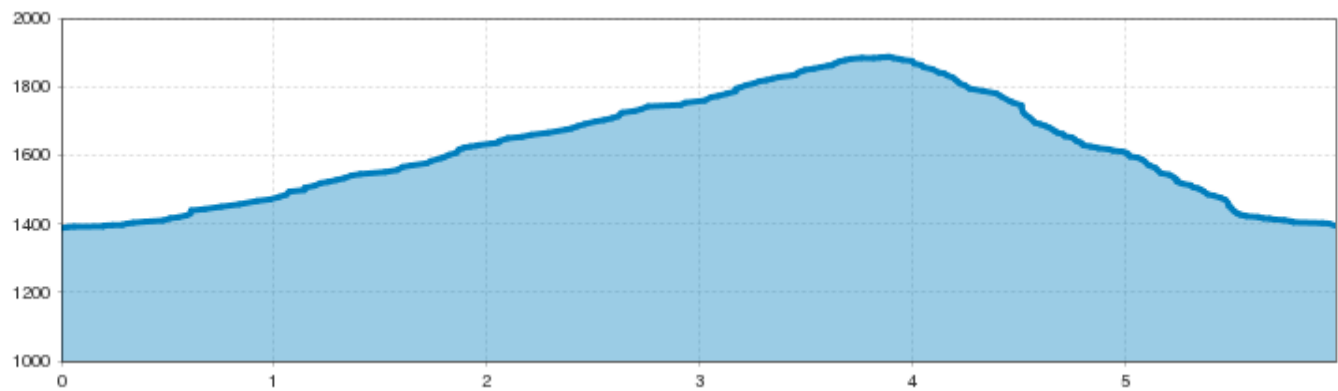
Walking time / total
3:00 h



Walking time / descent
1:00 h



Hike to Arzler Alm



Information

Starting point	Scheibe
Destination point	Scheibe/Piösmes
Path surface	wide path, track

Description

From the starting point hike along the agricultural road up to the catered mountain hut Arzler Alm. Return via the same route or via a steeper trail.

Route type

Circular hike

Arrival

Take the bus till the bus stop St. Leonhard Scheibe.

 Impressions

