

Hike to Mauchele Alm



Elevation gain
360 m



Elevation loss
360 m



Highest point
1819 m



Walking time / ascent
1:30 h



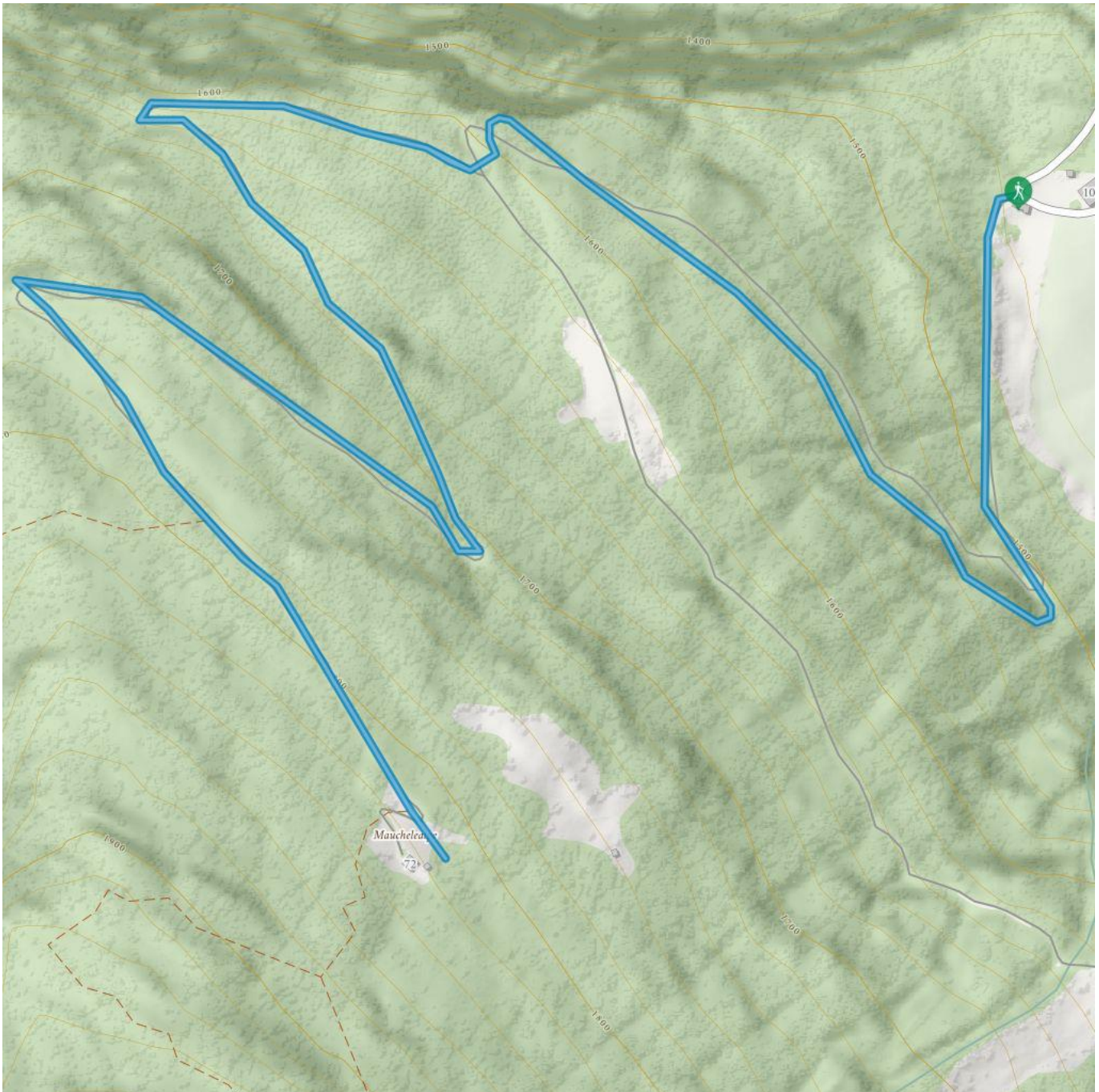
Route length
5,4 km



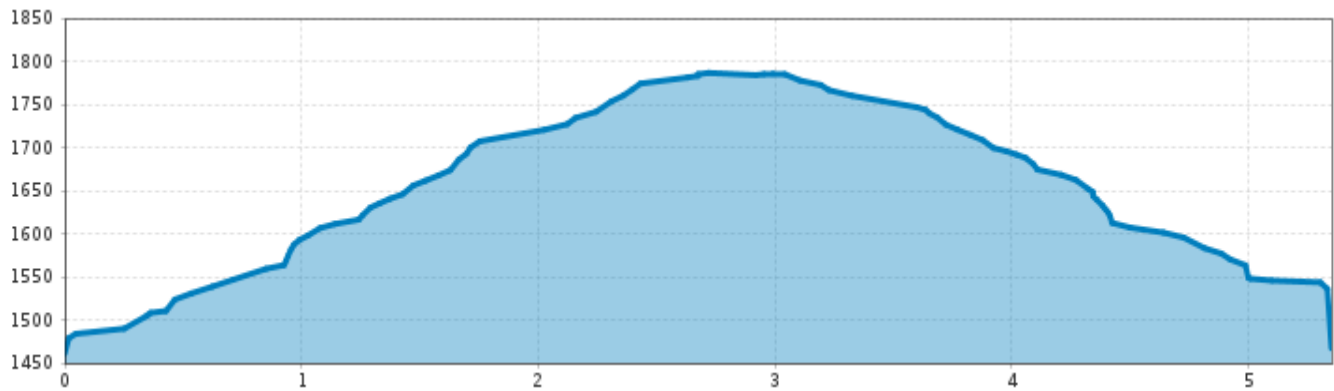
Walking time / total
2:30 h



Walking time / descent
1:00 h



Hike to Mauchele Alm



Information

Starting point **Rehwald**
Finishing point **Rehwald**
Path surface **wide path**

Getting there
Take the bus till the bus stop Zaunhof Moosbrücke. After a 30 minutes walk you reach the startin point Rehwald.

Description

Follow the agricultural road from the starting point in Rehwald to the catered mountain hut Mauchele Alm. Return to your starting point via the same route

 Impressions

