

Arzler Alm circular route – Kreuzjoch – Tiefentalalm



Elevation gain
1000 m



Elevation loss
1000 m



Highest point
2297 m



Walking time / ascent
3:00 h



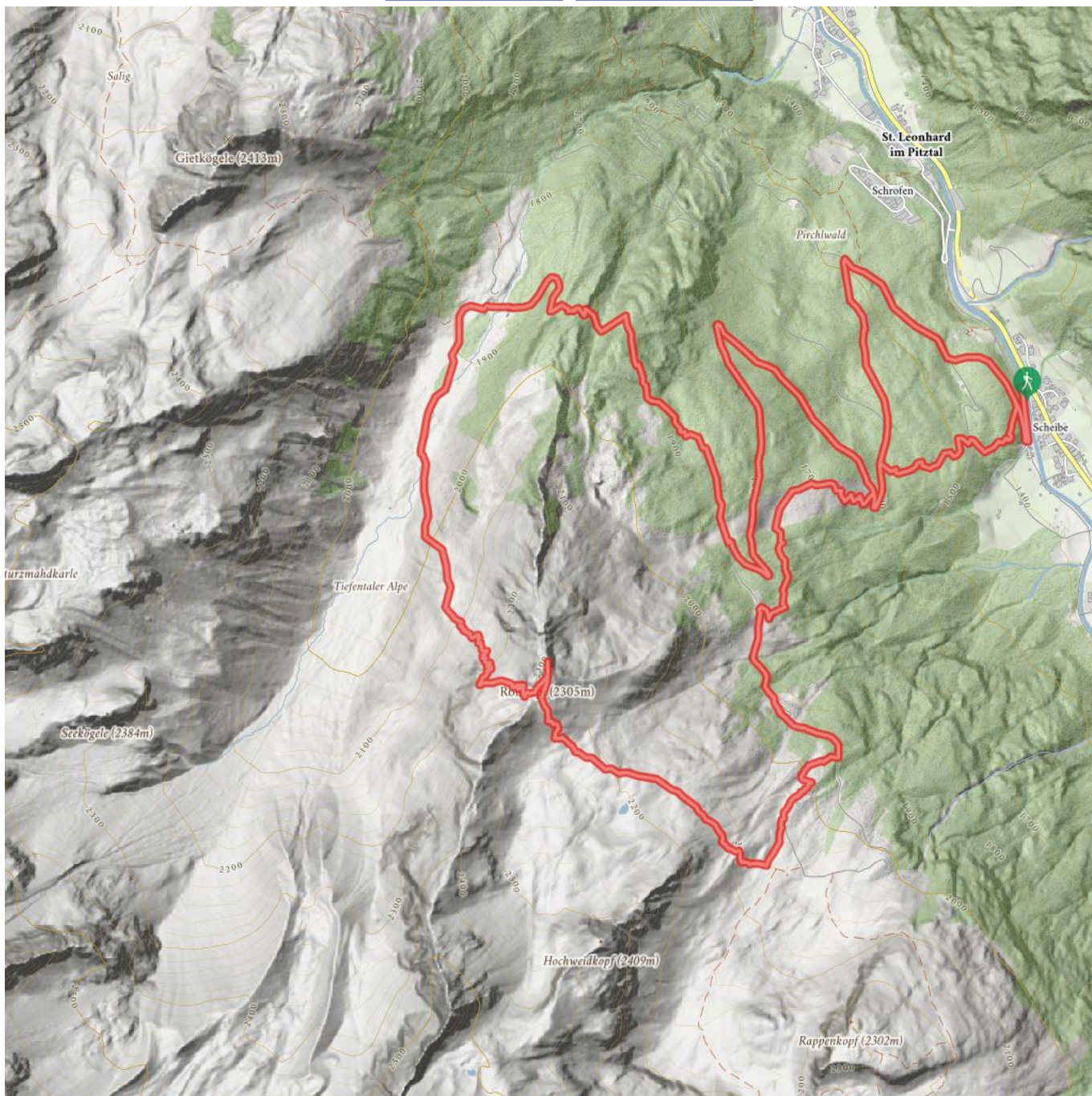
Route length
11,3 km



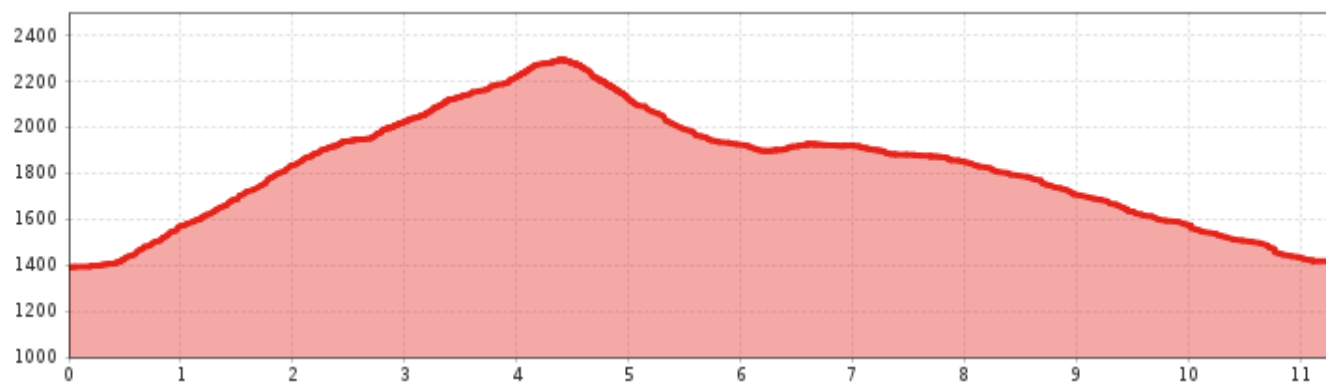
Walking time / total
5:00 h



Walking time / descent
2:00 h



Arzler Alm circular route – Kreuzjoch – Tiefentalalm



Information

Starting point	Scheibe
Finishing point	Scheibe/Piösmes
Path surface	wide path, track

Route type

Circular hike

Getting there
Take the bus till the bus stop St. Leonhard Scheibe.

Description

A steep trail leads from the starting point up to the catered mountain hut Arzler Alm. Once there, turn left onto a trail towards Rappenkopf until you reach the Kreuzjoch turnoff. Then walk to past a hunting lodge. Descend via Tiefentalalm mountain hut and continue along the agricultural road back down to your starting point.

 Impressions

