

Panoramic tour Hochzeiger – Sechszeiger – Kalbenalm - Gondola top station



Elevation gain
580 m



Elevation loss
580 m



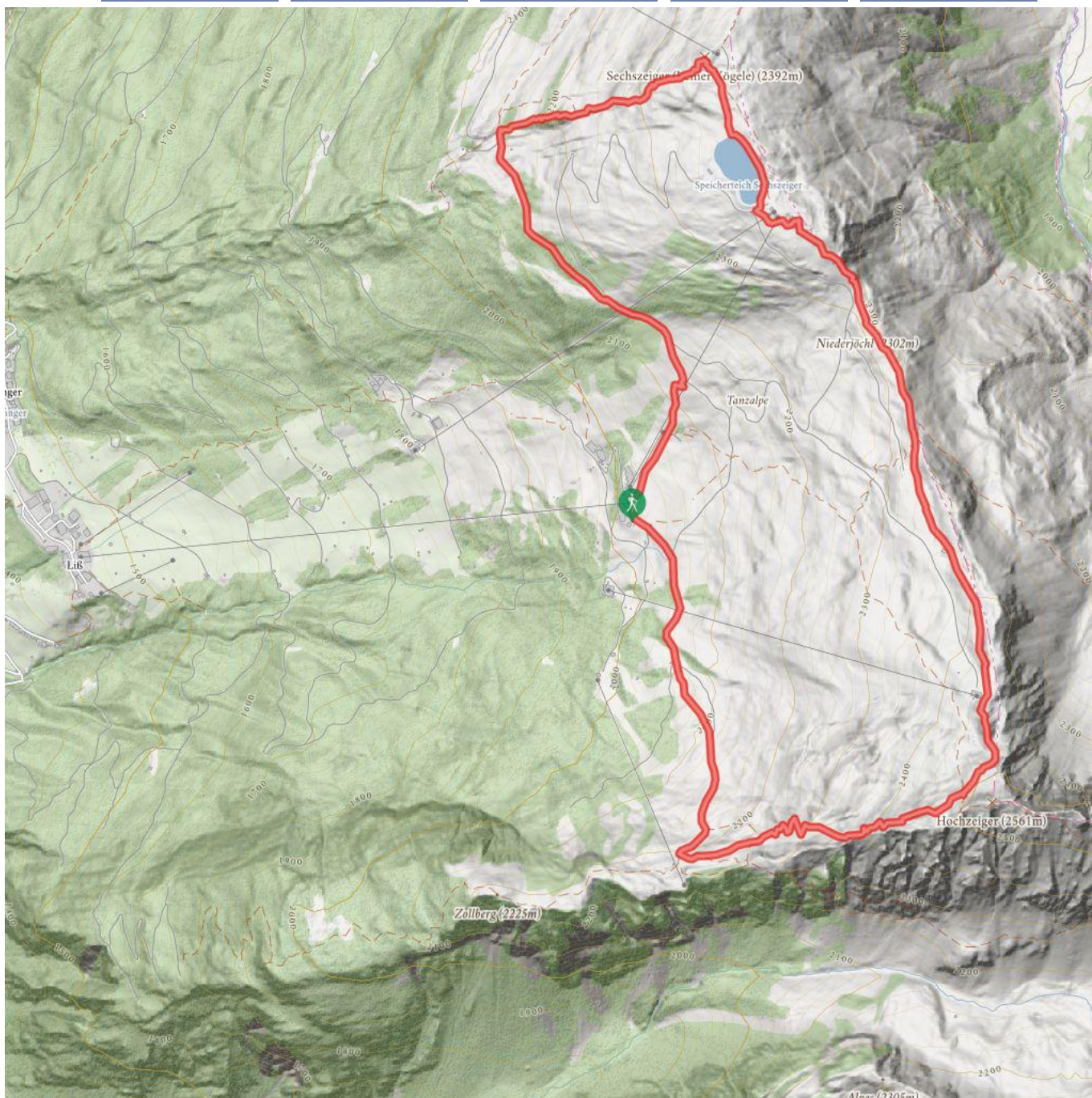
Highest point
2492 m



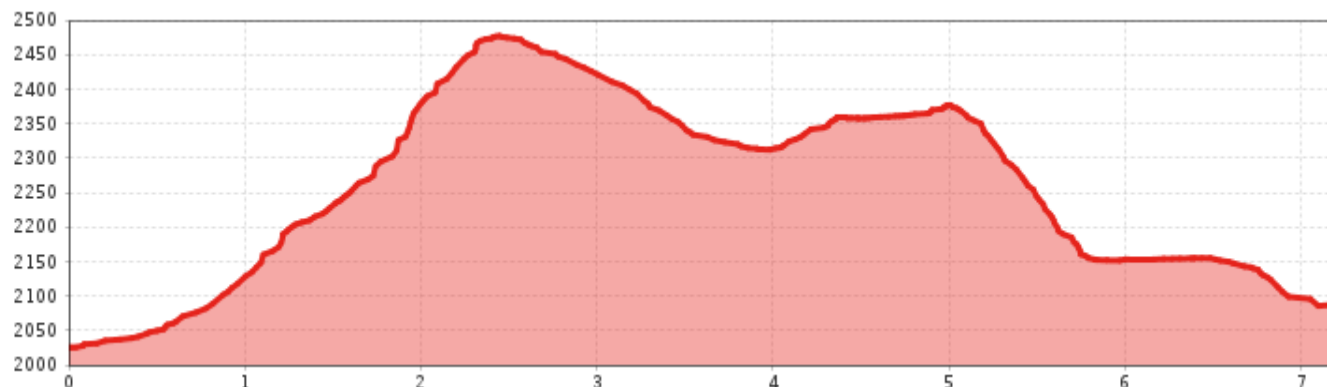
Route length
7,2 km



Walking time / total
5:00 h



Panoramic tour Hochzeiger – Sechszeiger – Kalbenalm - Gondola top station



Information

Starting point **gondola top station**

Finishing point **gondola top station**

Path surface
track, panoramic path

Route type

Circular hike

Getting there

Take the bus till the bus stop Jerzens Hochzeiger. Afterwards use the lift (Sektion I) up to the starting point.

Description

Starting point: gondola bottom station. Take the gondola to the Mittelstation (intermediate station). From there take the path to the right towards the Zollberg peak and continue to the left on the Ferdinand-Wohlfarter trail up to the Hochzeiger peak (2,560 m). Following this a beautiful panoramic path continue to the Sechszeiger peak (2,360 m). After the peak take the path to the left downhill to the catered mountain hut Kalbenalm and return to the intermediate station.

 Impressions





