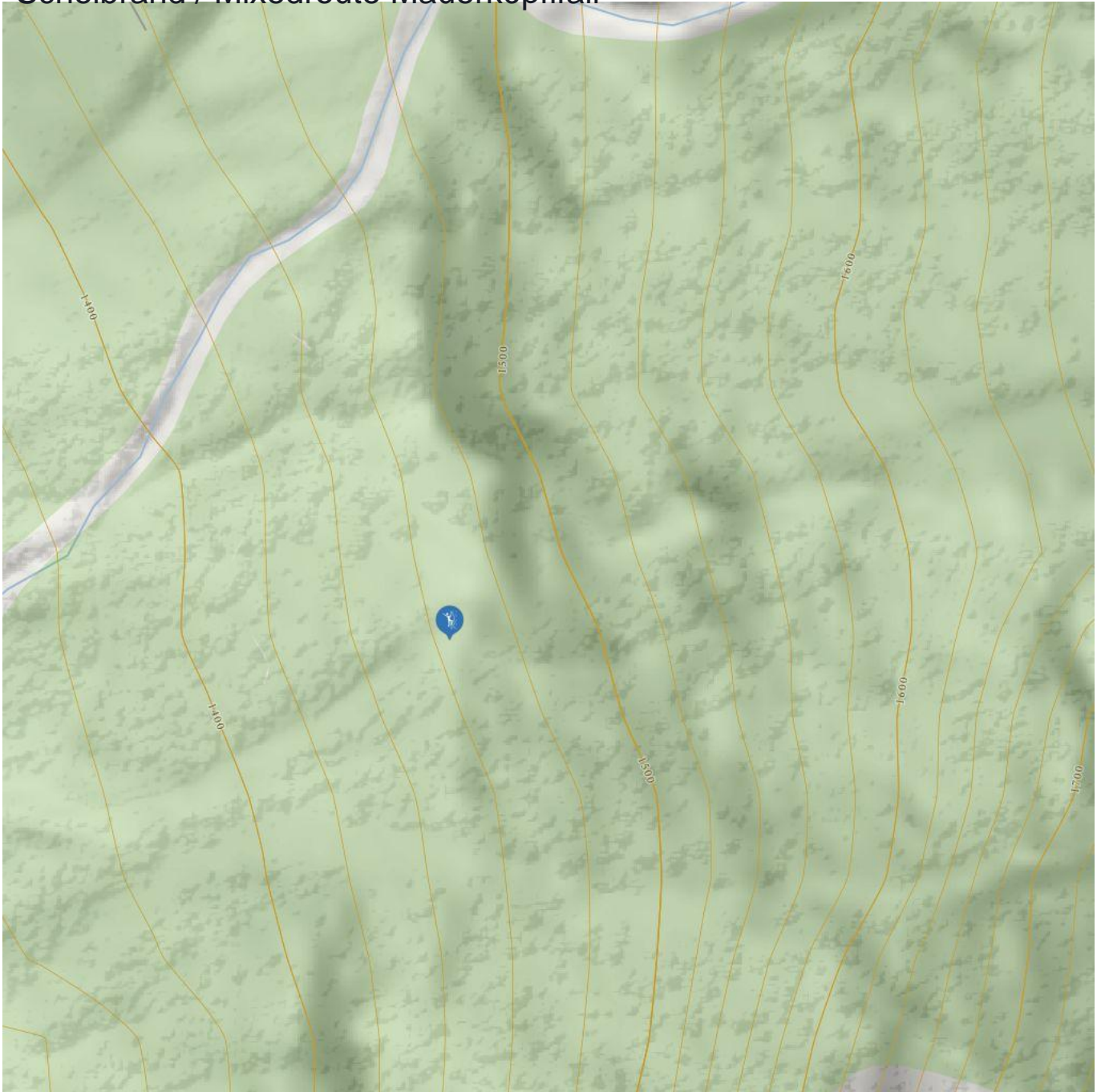


# Scheibbrand / Mixedroute Mauerköpflfall



# Scheibrand / Mixedroute Mauerköpfllfall

## Information

Outline of starting point,  
access, location

Elevation from **1287 m**

Elevation to **1350**

Difficulty level route from **7, M5**

Difficulty level to **WI 7**

Getting there

**By car: Coming from Wenns drive until the hamlet Scheibrand.**

**By bus: Use the bus till the bus stop St. Leonhard i. P. Scheibrand.**

Public transport

**[www.climbers-paradise.com/eisklettern-pitztal/location/vord-pitztal-mixedroute-mauerkoepflfall/](http://www.climbers-paradise.com/eisklettern-pitztal/location/vord-pitztal-mixedroute-mauerkoepflfall/)**

Parking

**There is no public parking space in Scheibrand.**

**Parking after consultation with the neighbours.**

## Description

Very rewarding and challenging mixed route.

Risk of avalanches: hardly