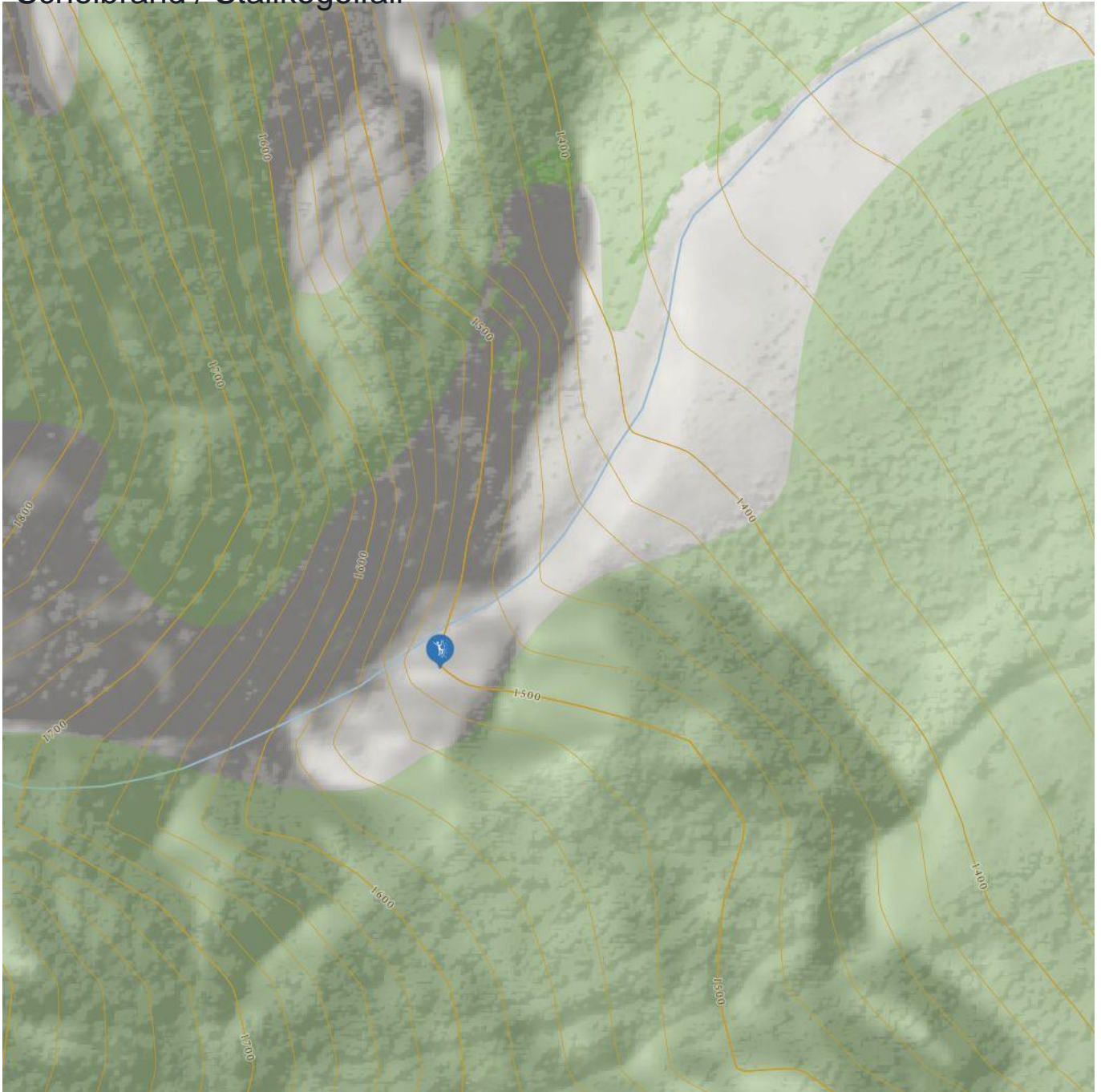


Scheibbrand / Stallkogelfall



Scheibrand / Stallkogelfall

Information

Outline of starting point,
access, location

Elevation from **1287 m**

Elevation to **1500**

Difficulty level route from **WI 4+**

Difficulty level to **WI 4+**

Getting there

By car: Coming from Wenns drive until the hamlet Scheibrand.

By bus: Use the bus till the bus stop St. Leonhard i. P. Scheibrand.

Public transport

www.climbers-paradise.com/eisklettern-pitztal/location/vord-pitztal-stallkogelfall/

Parking

There is no public parking space in Scheibrand.

Parking after consultation with the neighbours.

Description

Enormous, wide ice shield above Scheibrand.

Risk of avalanches: yes