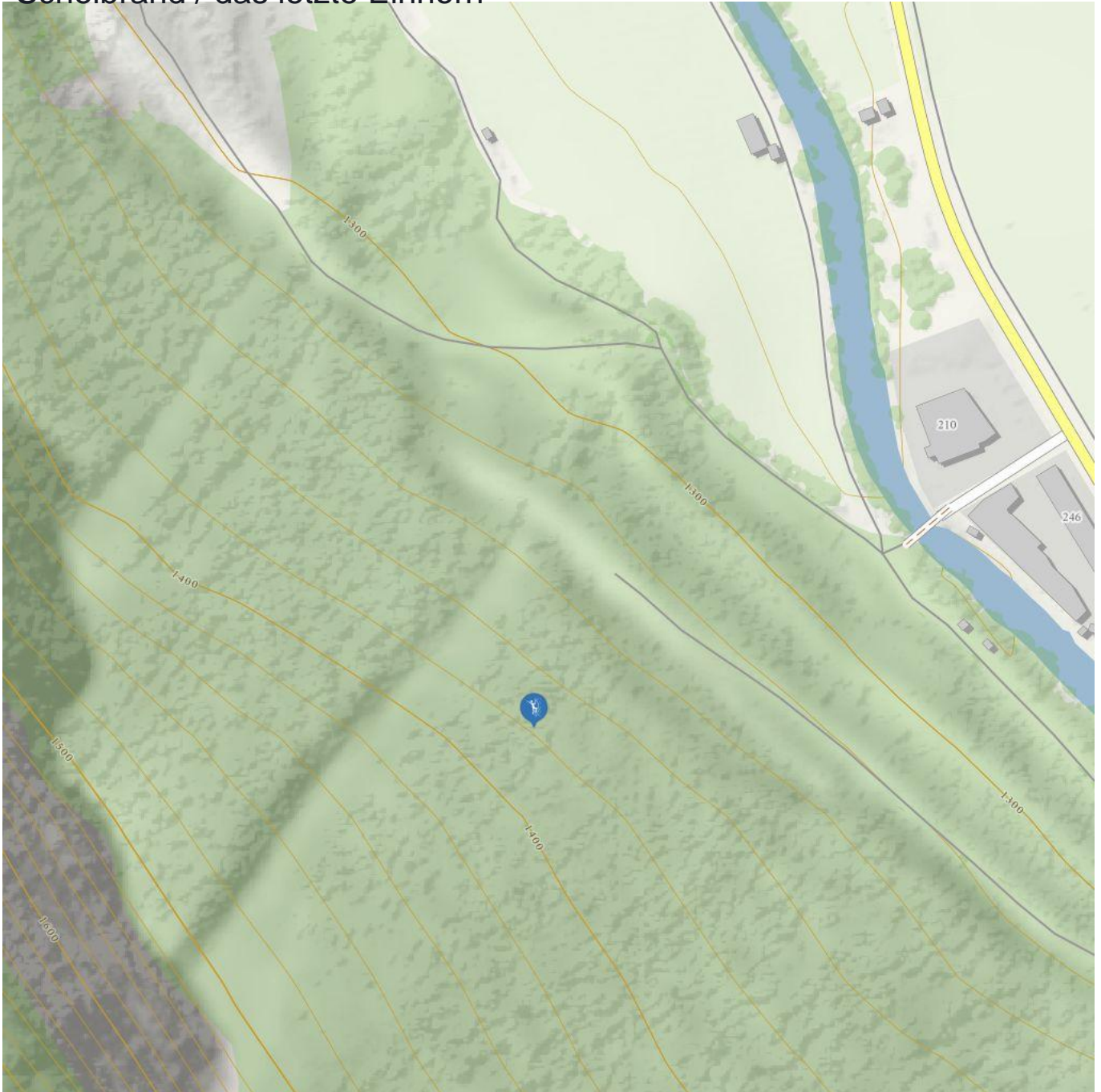


# Scheibbrand / das letzte Einhorn



# Scheibrand / das letzte Einhorn

## Information

Outline of starting point,  
access, location

Elevation from **1500 m**

Elevation to **1680**

Difficulty level route from **7-,M7**

Difficulty level to **WI 7**

Getting there

**By car: Coming from Wenns drive until the hamlet  
Hairach and park behind the recycling centre.**

**By bus: Use the bus till the bus stop Zaunhof  
Hairlach or St. Leonhard Scheibrand.**

Public transport

**[www.climbers-paradise.com/eisklettern-pitztal  
/location/vord-pitztal-das-letzte-einhorn/](http://www.climbers-paradise.com/eisklettern-pitztal/location/vord-pitztal-das-letzte-einhorn/)**

Parking

**Park behind the recycling centre.**

## Description

Beautiful, very demanding and extreme ice routes. Partly secured with bolts. The 180 meters long and difficult ice climbing ends with a freestanding Cone (or icicle) at the exit in the range WI 7.

Risk of avalanches: hardly