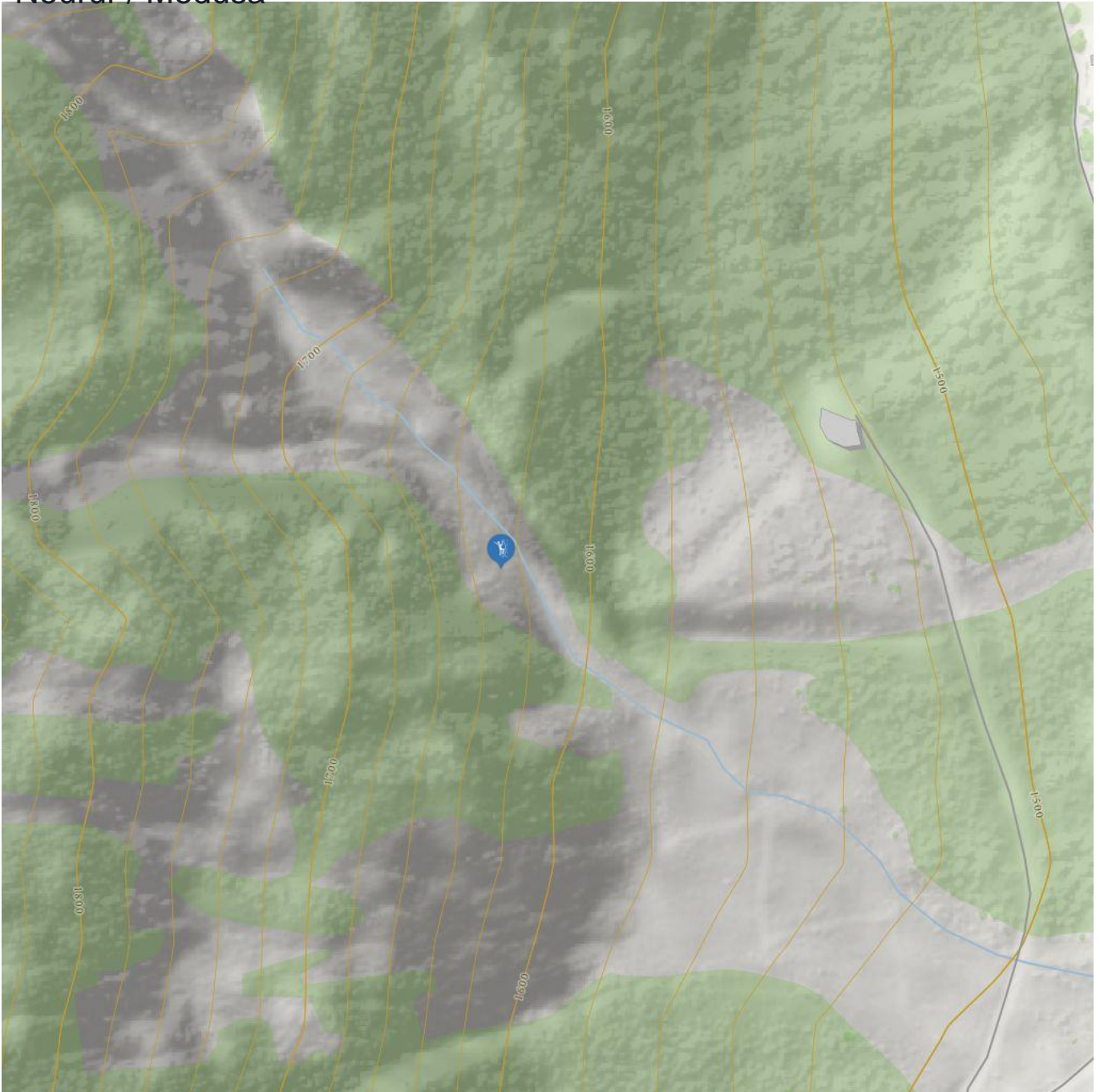


Neurur / Medusa



Neurur / Medusa

Information

Outline of starting point,
access, location

Elevation from **1460 m**

Elevation to **1650**

Difficulty level route from **WI 4**

Difficulty level to **WI 6**

Getting there

**By car: Coming from Wenns drive until the hamlet
Neurur.**

By bus: Use the bus till the bus stop Neurur.

Public transport

**[www.climbers-paradise.com/eisklettern-pitztal
/location/pitztal-mitte-medusa/](http://www.climbers-paradise.com/eisklettern-pitztal/location/pitztal-mitte-medusa/)**

Parking

There is no public parking space in Neurur.

Parking after consultation with the neighbours.

Description

Rewarding and challenging icefall facing eastwards.

Risk of avalanches: yes