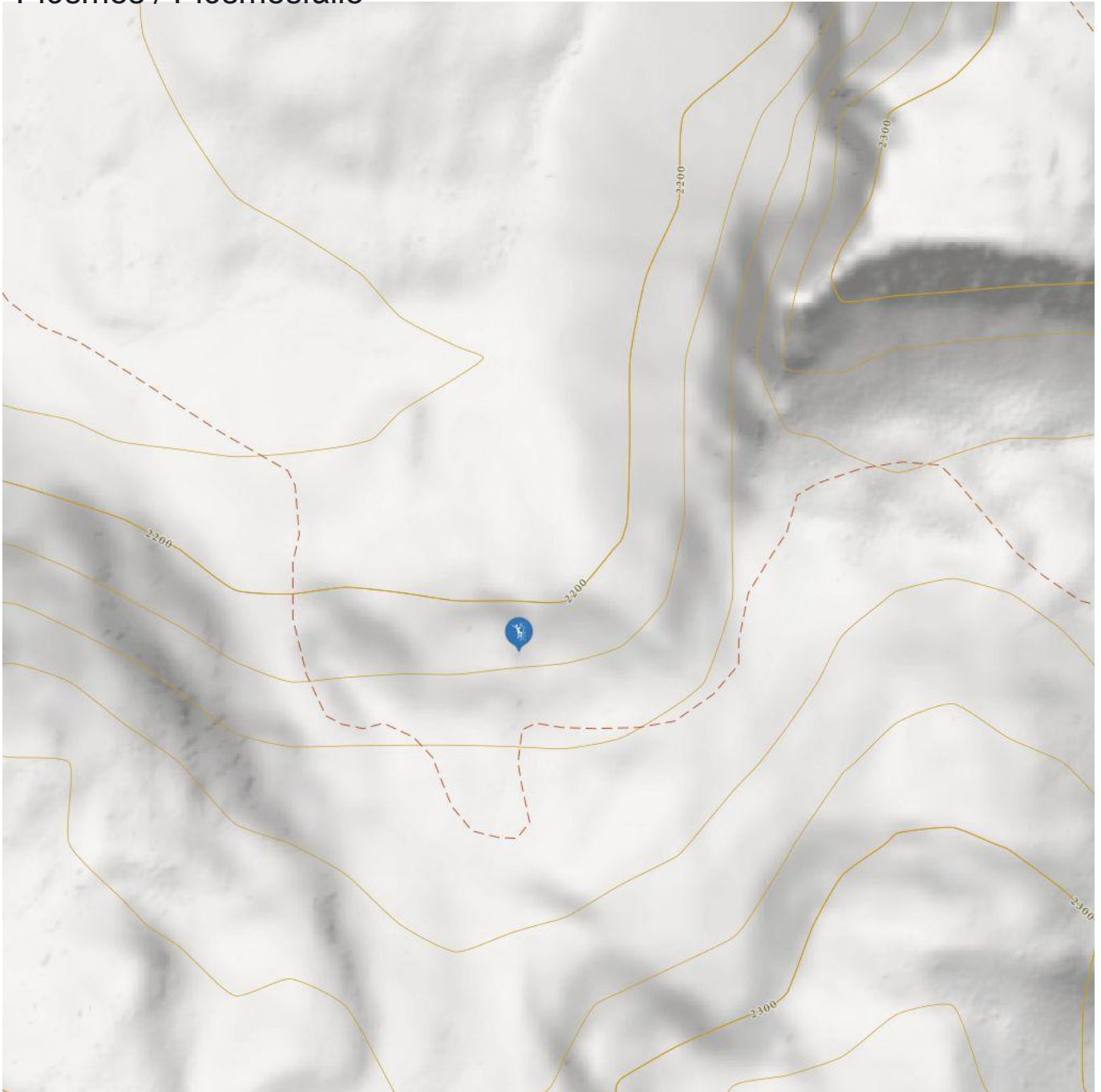


Piösmes / Piösmesfälle



Piösmes / Piösmesfälle

Information

Outline of starting point,
access, location

Elevation from **1396 m**

Elevation to **2250**

Difficulty level route from **WI 4**

Difficulty level to **WI 4**

Getting there

By car: Coming from Wenns drive until the hamlet Piösmes.

By bus: Use the bus till the bus stop Piösmes.

Public transport

www.climbers-paradise.com/eisklettern-pitztal/location/pitztal-mitte-pioesmesfaelle/

Parking

At the end of the hamlet Piösmes is a free car park on the right-hand side.

Description

Two impressive ice pillars above the Arzler Alm at the foot of the Rofelewand. The icefalls are located in high-Alpine terrain and are best reached with backcountry skis or snowshoes via the Arzler Alm.

Risk of avalanches: yes