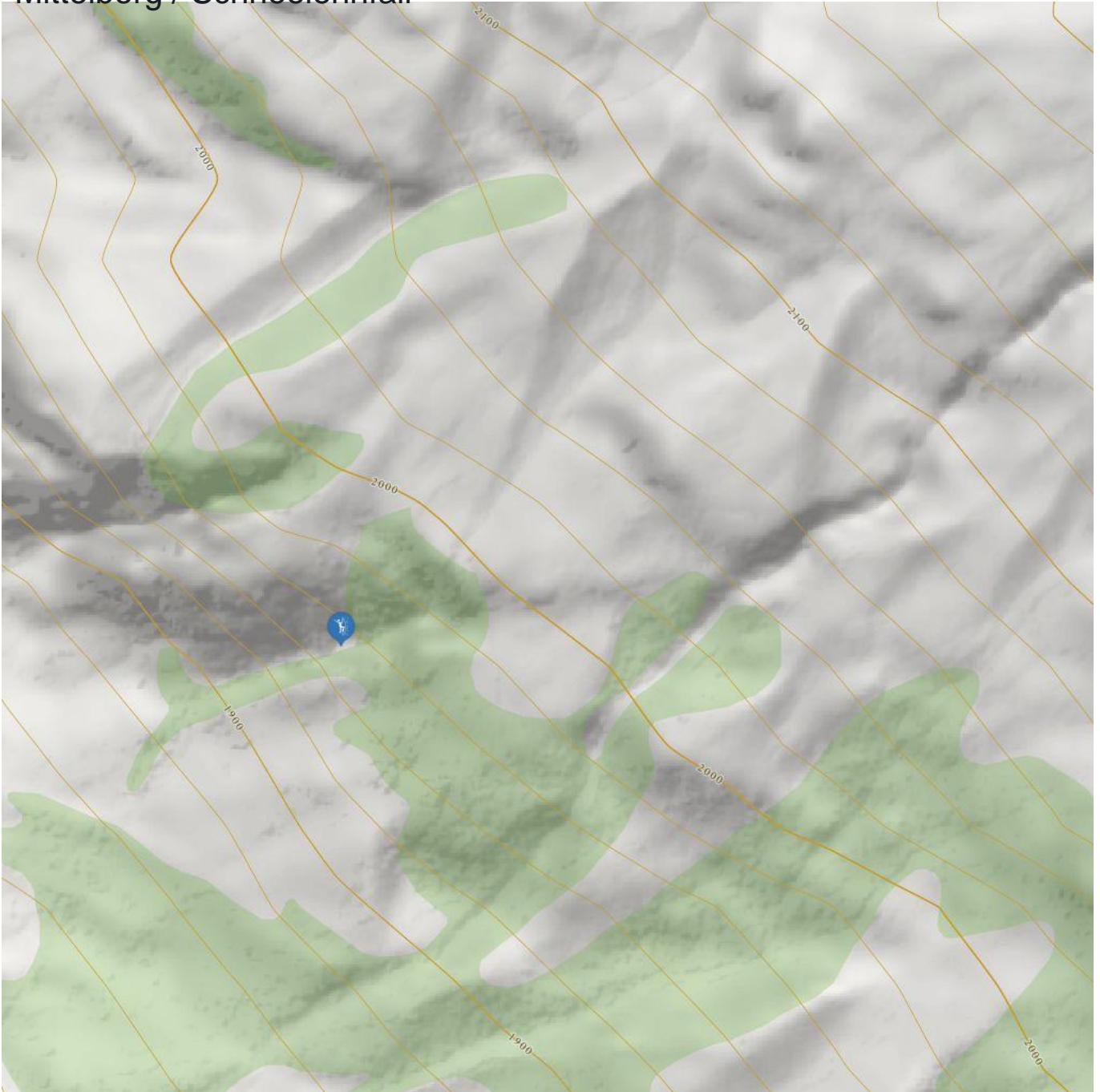


Mittelberg / Schneelehnfall



Mittelberg / Schneelehnfall

Information

Outline of starting point,
access, location

Elevation from **1738 m**

Elevation to **1850**

Difficulty level route from **WI 4-**

Difficulty level to **WI 4+**

Getting there

By car: Coming from Wenns drive until Mittelberg and park at the Pitztaler Gletscherbahn.

By bus: Use the bus till the bus stop Mittelberg Wendestelle.

Public transport

www.climbers-paradise.com/eisklettern-pitztal/location/hint-pitztal-schneelehnfall/

Parking

Park at the Pitztaler Gletscherbahn.

Description

Icefall only suitable with good ice for climbing. Otherwise, watch out for water undermining.

Risk of avalanches: yes