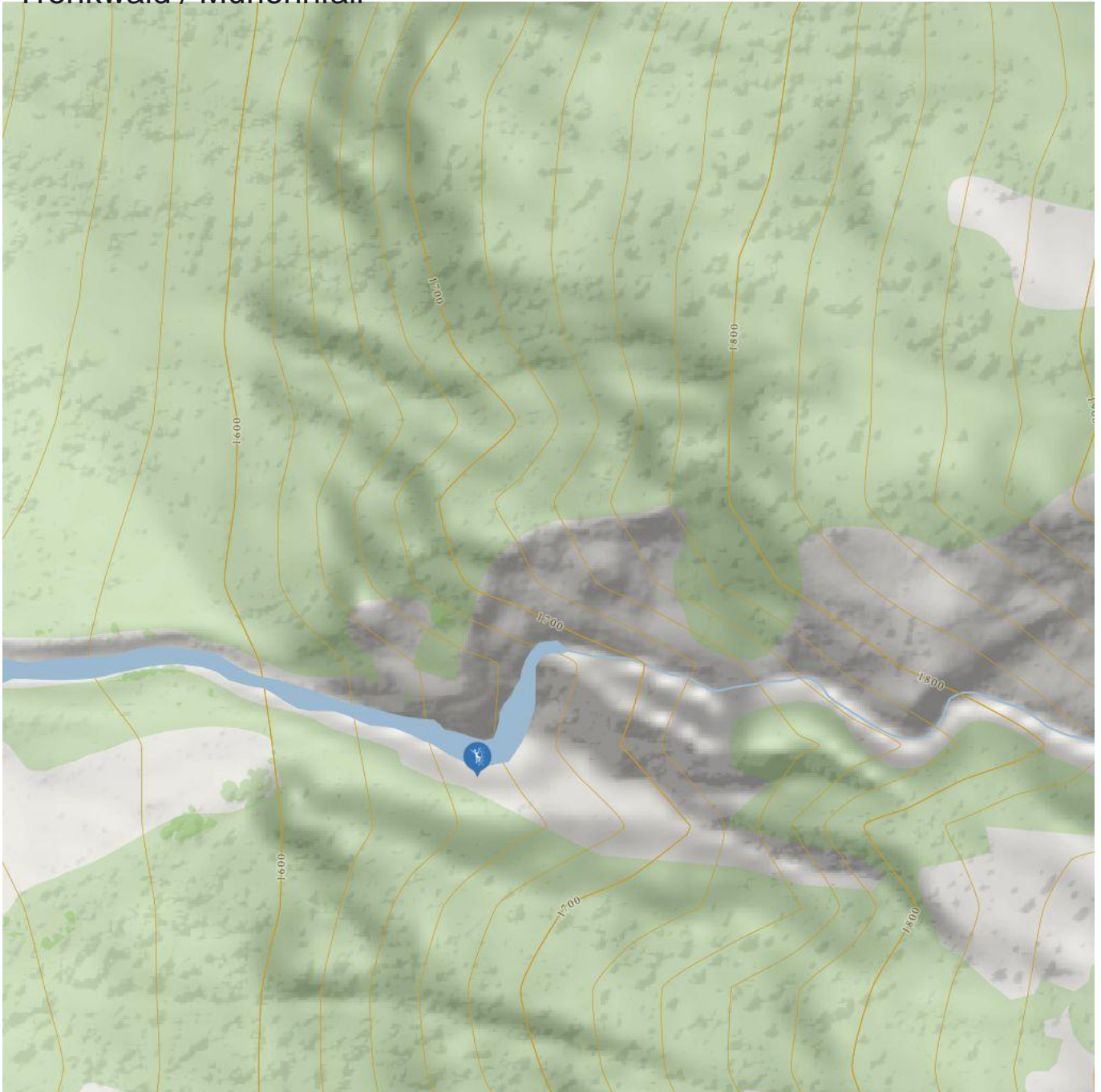


Trenkwald / Murlehnfall



Trenkwald / Murlehnfall

Information

Outline of starting point,
access, location

Elevation from **1530 m**

Elevation to **1550**

Difficulty level route from **WI 3**

Difficulty level to **WI 5**

Getting there

**By car: Coming from Wenns drive until the hamlet
Trenkwald.**

By bus: Use the bus till the bus stop Trenkwald.

Public transport

**[www.climbers-paradise.com/eisklettern-pitztal
/location/pitztal-mitte-muhrlehnfall/](http://www.climbers-paradise.com/eisklettern-pitztal/location/pitztal-mitte-muhrlehnfall/)**

Parking

There is no public parking space in Trenkwald.

Parking after consultation with the neighbours.

Description

Interesting westward facing Icefall with easily reachable starting point.

Risk of avalanches: yes