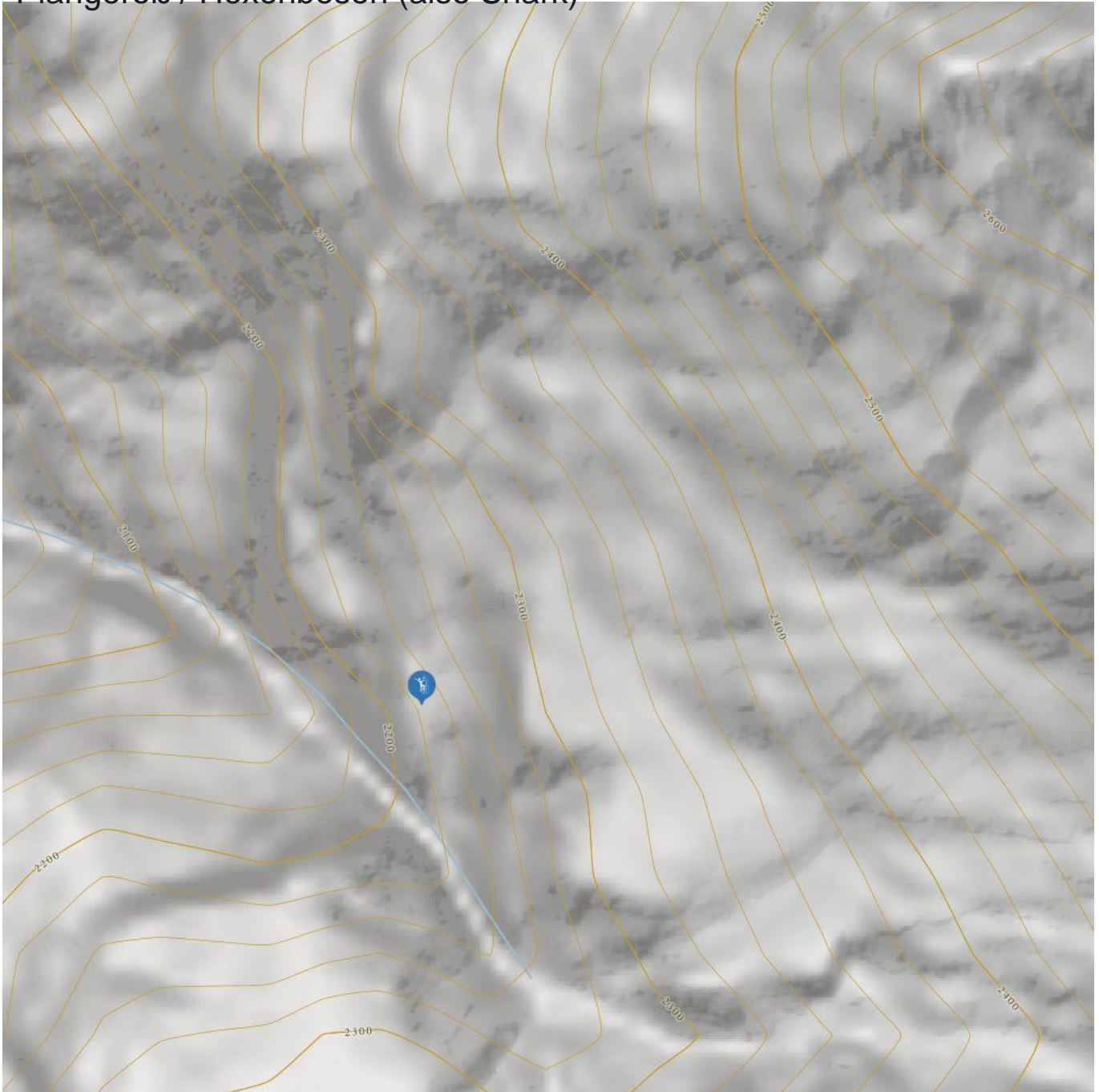


Plangeroß / Hexenbesen (also Shark)



Plangeroß / Hexenbesen (also Shark)

Information

Outline of starting point,
access, location

Elevation from **1609 m**

Elevation to **1850**

Difficulty level route from **WI 5+**

Difficulty level to **WI 6**

Getting there

By car: Coming from Wenns drive until the hamlet Plangeroß.

By bus: Use the bus till the bus stop Plangeroß.

Public transport

www.climbers-paradise.com/eisklettern-pitztal/location/hint-pitztal-hexenbesen-auch-shark-genannt/

Parking

There is no public parking space in Plangeroß.

Parking after consultation with the neighbours.

Description

Extremely difficult, narrow icefall with mixed-climbing. First climbed by Eder Stefan and Hans Streng. Rock climbing gear (Camalot up to size 3, pitons and slings) is absolutely essential.

Risk of avalanches: yes