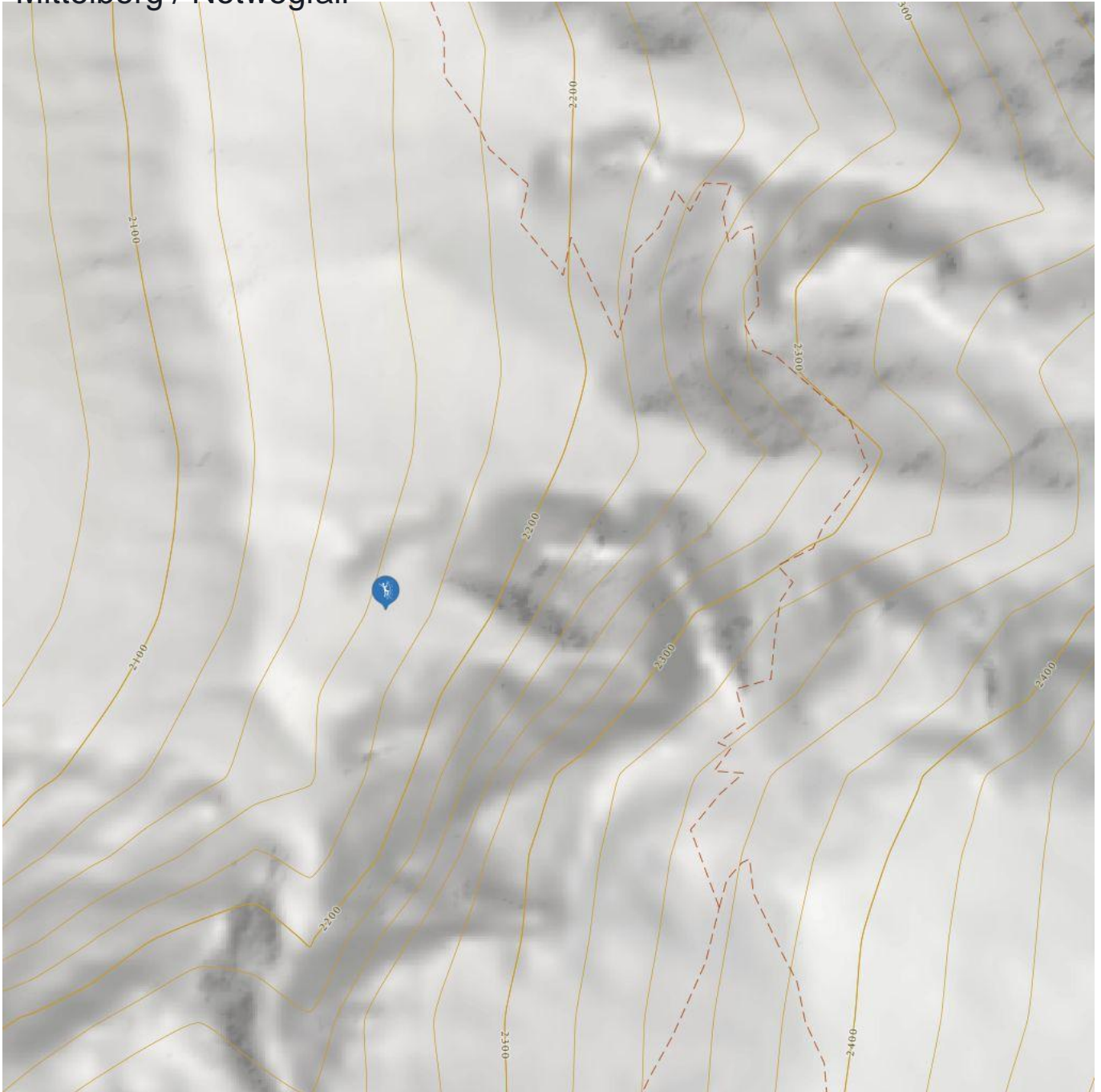


# Mittelberg / Notwegfall



# Mittelberg / Notwegfall

## Information

Outline of starting point,  
access, location

Elevation from **1738 m**

Elevation to **2500**

Difficulty level route from **WI 3**

Difficulty level to **WI 5-**

Getting there

**By car: Coming from Wenns drive until Mittelberg and park at the Pitztaler Gletscherbahn.**

**By bus: Use the bus till the bus stop Mittelberg Wendestelle.**

Public transport

**[www.climbers-paradise.com/eisklettern-pitztal/location/hint-pitztal-notwegfall/](http://www.climbers-paradise.com/eisklettern-pitztal/location/hint-pitztal-notwegfall/)**

Parking

**Park at the Pitztaler Gletscherbahn.**

## Description

3 beautiful and high-Alpine Icefalls, great for a day trip.

Risk of avalanches: yes