
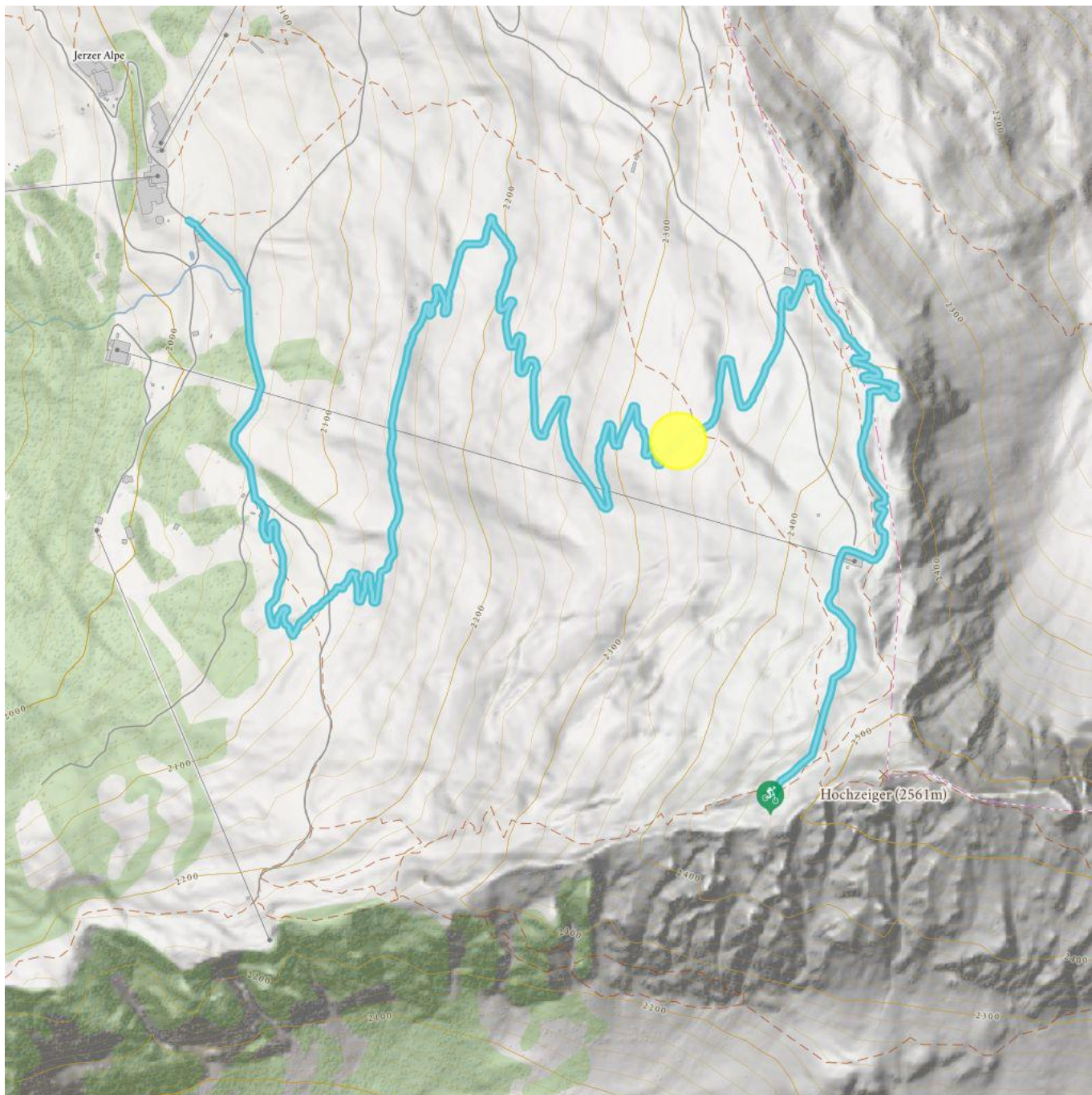


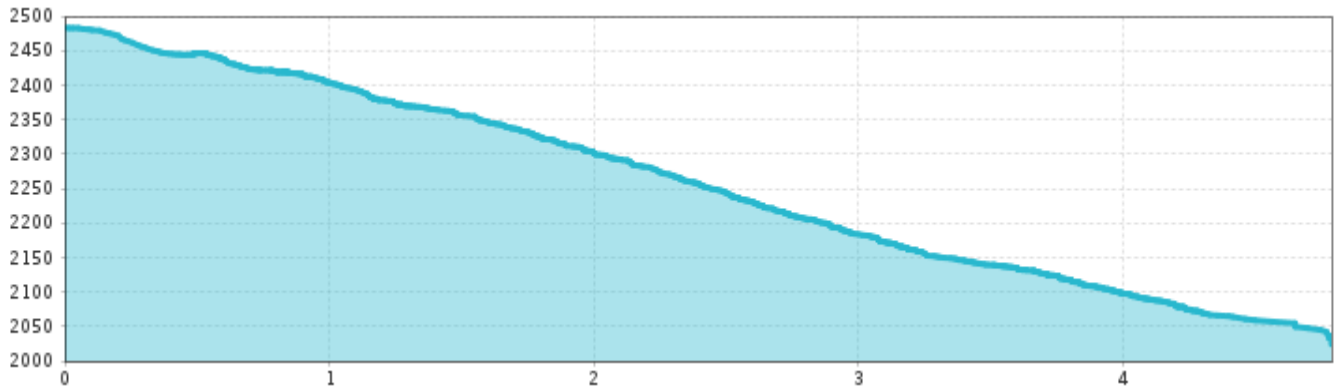
Ibex Trail


Highest point
2500 m


Route length
4,5 km



Ibex Trail



Elevation loss **450 m**

Information

Starting point

**Bergstation Achtersesselbahn "Hochzeiger 2,5"
2,500 m**

Finishing point

Mittelstation Hochzeiger, 2,000 m

Getting there

**If you arrive by car, follow the road signs to
Jerzens Hochzeiger Bergbahnen.**

Public transport

Take the bus till the bus stop Jerzens Hochzeiger.

Parking

**There is a huge car park at the valley station of the
Hochzeiger Bergbahnen in Liss/Jerzens for free.**

Description

The Ibex bike trail starts at 2,500 meters directly at the top station of the eight-seater chairlift. The blue single trail impresses with a panoramic view and it's beautifully placed curves. All bike enthusiasts will experience action-packed downhill fun over a length of 4.5 km to the Hochzeiger middle station at 2,000 meters. If you want, you can continue biking fun on the Hochzeiger family trail (start at the Hochzeiger middle station at 2,000 meters, end at the Hochzeiger valley station at 1,450 m) The total length of both trails is 11.5 km, the total difference of altitude is 1,050 m. The starting point of the ibex trail can be easily reached with the Hochzeiger gondola lift and the Hochzeiger eight-seater chairlift. There are own bike tickets available. At the bottom station you can also find a bike rental and a bike washing area.

 Impressions

